



Graham Road, E8

£475,000

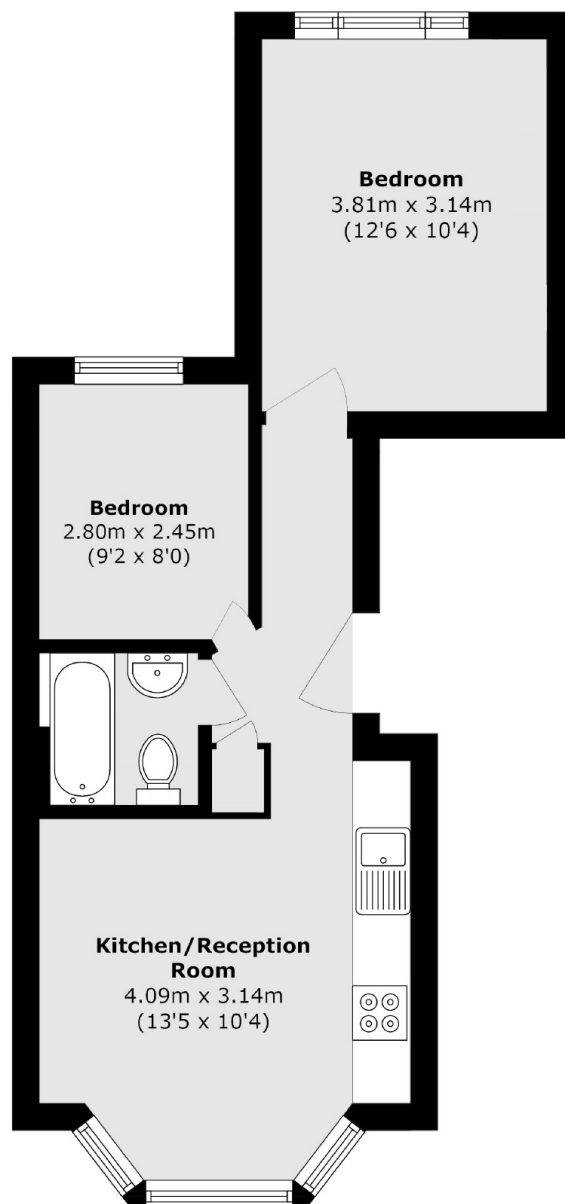
A two double bedroom period conversion in the heart of Hackney. The property has been renovated by the current owners and has an open plan kitchen living area, bay window, high ceilings and family bathroom.

Graham Road runs between Dalston and Mare Street with many shops, cafes and amenities to choose from including Broadway Market and its famous weekend market. It is half a mile from London Fields and its tennis courts and Lido. Hackney Central & Hackney Downs Overground Stations are under a quarter of a mile away.

Features

- Two Double Bedrooms
- Period Conversion
- Chain Free
- Open Plan
- Recently Renovated
- London Fields

Graham Road, London, E8



Total area (approx.): 42.6 sq. m (458.5 sq. ft)

Dexters

Hackney Central
331 Mare Street
Hackney
London
Sales
020 7067 2420

Energy Rating: C. We aim to make our particulars both accurate and reliable. However they are not guaranteed; nor do they form part of an offer or contract. If you require clarification on any points then please contact us, especially if you're traveling some distance to view. Please note that appliances and heating systems have not been tested and therefore no warranties can be given as to their good working order.

 **RICS** | Regulated
Estate Agent
and Letting Agent

[dexters.co.uk](https://www.dexters.co.uk)