



Anton Street, E8

£850,000

A contemporary three bedroom, freehold, end of terrace in a gated mews. Set over three storeys the property has a private patio garden and modern fixtures and fittings throughout.

Halley Mews is located off Anton Street in the heart of Hackney. The property is surrounded by a plethora of cafes, restaurants and shops and the property is less than half a mile to Hackney Downs & Hackney Central Stations offering direct transport links to the City and West End. Hackney Downs Park is 500 ft away and London Fields is half a mile away with tennis courts and its famous Lido.

Features

Offers Over
Three Double Bedrooms
Modern Freehold
Gated Mews
Two Bathrooms
Bike Shed
Close To Transport
Garden



Anton Street, E8

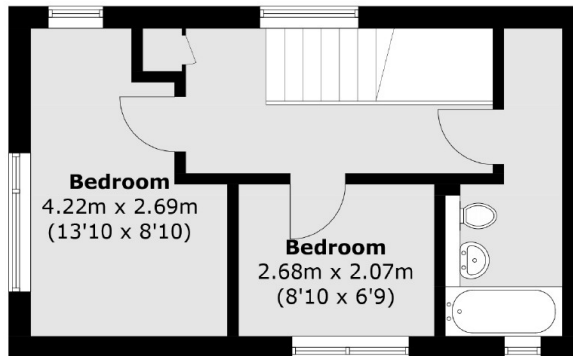
Nestled within a secure mews development, this home offers quiet modern living in a central location. The ground floor has an open plan kitchen living area with floor to ceiling glass doors leading to the private patio garden, also with side access. There is a pantry off the kitchen and a separate W/C on this level.

Upstairs is the primary bedroom with walk through wardrobe & en-suite and on the top floor are two further bedrooms and family bathroom.

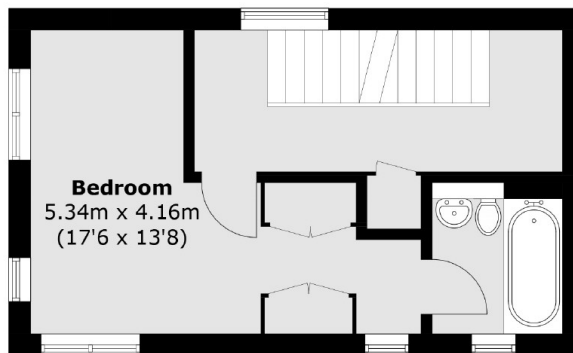
There is a plenty of storage throughout and an external bike shed.



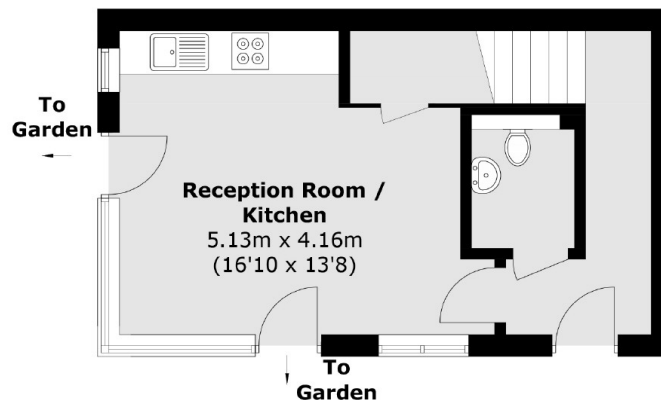
Anton Street, London, E8



Second Floor



First Floor



Ground Floor

Total area (approx.): 91.5 sq. m (984.9 sq. ft)