



Goldsmith Road, E10

£375,000

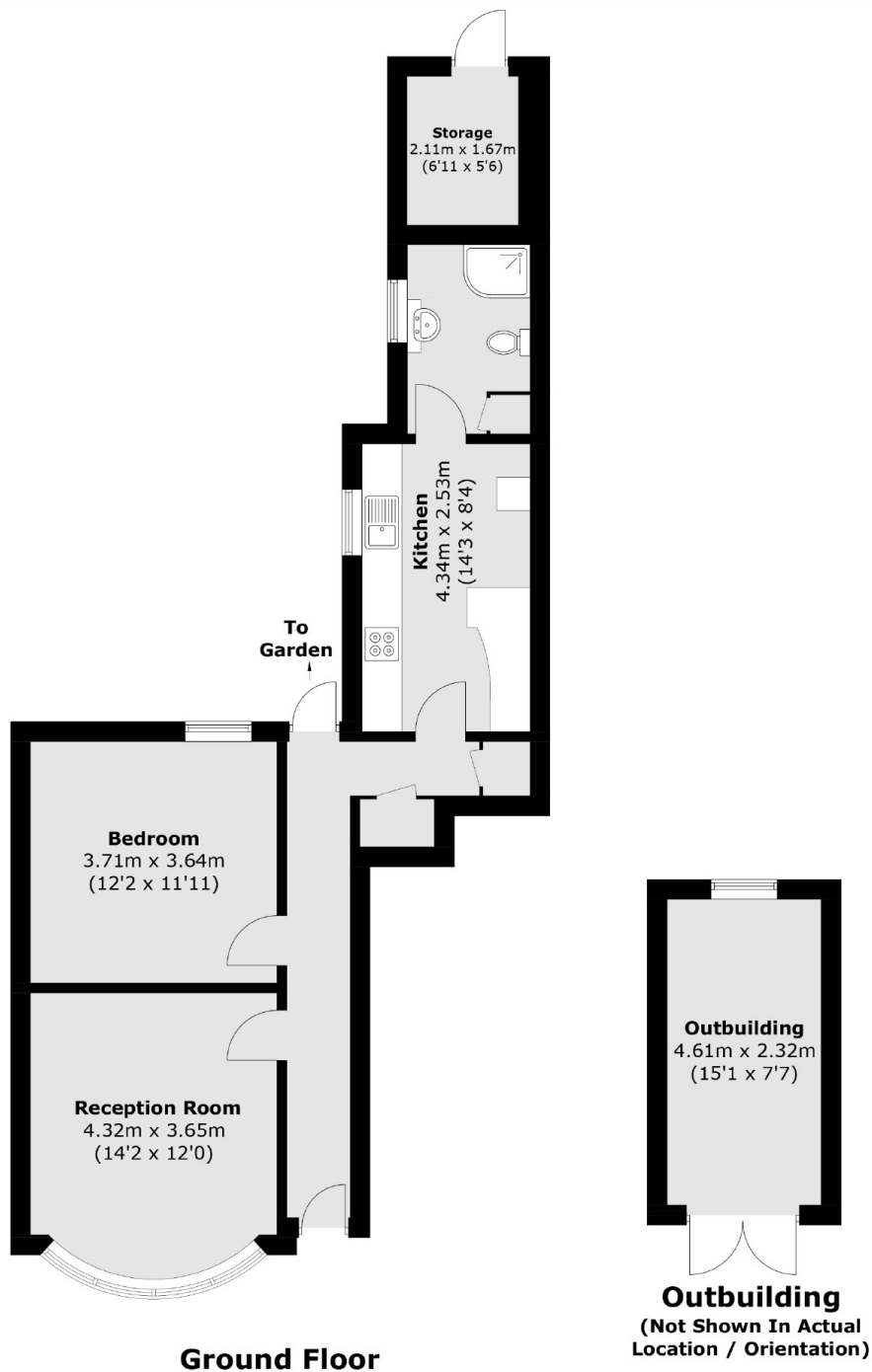
A one bedroom period flat with a large landscaped private garden. The property measures over 710 sq ft and comes with modern fitted kitchen, reception room with bay window, wooden floors and a recently built garden studio. There is a long lease and off street parking.

Located within a residential area with access to convenient transport links; Leyton Midland Road Overground half a mile away and Leyton Station, on the Central Line, under one mile offering direct access into the City. Stratford City and Westfield Shopping Centre is a short drive away and the vast green spaces of Hackney Marshes & Leyton Jubilee Park are nearby.

Features

Offers Over
One Double Bedroom
Private Entrance
Large Private Garden
Ample Storage
Over 710sqft
Wooden Floors
Off Street Parking
Garden Studio

Goldsmith Road, London, E10



Approx Internal Area: 57.3 sq. m (616.8 sq. ft)
Storage: 3.9 sq. m (42.0 sq. ft)
Outbuilding: 10.9 sq. m (117.3 sq. ft)
Total: 72.1 sq. m (776.1 sq. ft)

Dexters

Hackney Central
331 Mare Street
Hackney
London
Sales
020 7067 2420

Energy Rating: D. We aim to make our particulars both accurate and reliable. However they are not guaranteed; nor do they form part of an offer or contract. If you require clarification on any points then please contact us, especially if you're traveling some distance to view. Please note that appliances and heating systems have not been tested and therefore no warranties can be given as to their good working order.

 **RICS** | Regulated
Estate Agent
and Letting Agent

dexters.co.uk