



**Ritson Road, E8**  
**£950,000**

**Dexters**





## Ritson Road, E8

An architecturally designed modern home, Ritson Haven. Set across three storeys this bespoke house has two bedrooms with en-suite and Juliet balcony, private courtyard and green roof. It is being sold chain free.

With a striking facade using Danish Petersen Tegi long slim brick, this end of terrace house is built from high quality materials & fixtures including Birch plywood, Lusso Stone, Bust and Punch switch and sockets & Michael Anastassiades Pendant lighting. Each bedroom and en-suite has its own floor with built in storage, bespoke desk in the primary and hidden radiators. The bathrooms have white gloss tiles and Lusso Stone fixtures. Downstairs is the open plan bespoke Birch plywood kitchen with Dinesen island face, spacious living room with room to dine, polished concrete floors and glass sliding doors leading out onto the patio courtyard. There is also a separate W/C on this floor.

Ritson Road is a quiet residential street running directly between Dalston and London Fields. The park and lido are within walking distance as well as the popular Ridley Road & Broadway Markets. Dalston Kingsland, Dalston Junction, Hackney Downs, Hackney Central are all half a mile away offering easy access into the City and the rest of London.

### Features

- Offers Over
- Architecturally Designed
- Two Bedrooms
- Two Bathrooms
- Modern Freehold
- Juliet Balconies





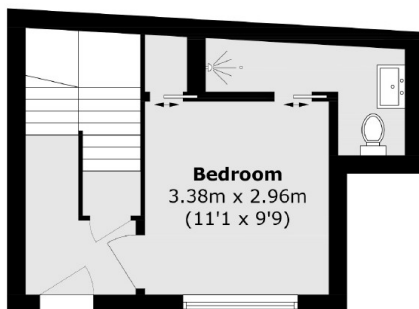




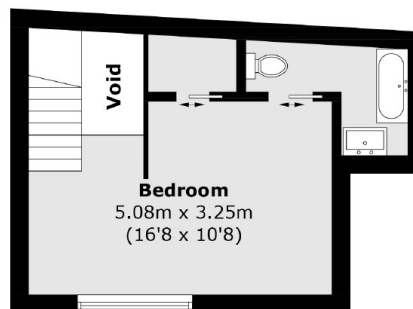




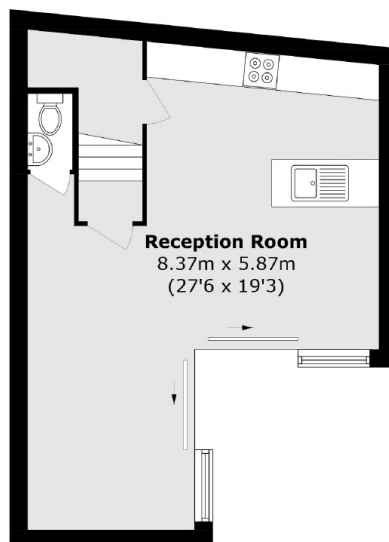
# Ritson Road, London, E8



**Ground Floor**



**First Floor**



**Lower Ground Floor**

Total area (approx.): 86.5 sq. m (931.0 sq. ft)