



Median Road, E5

£1,150,000

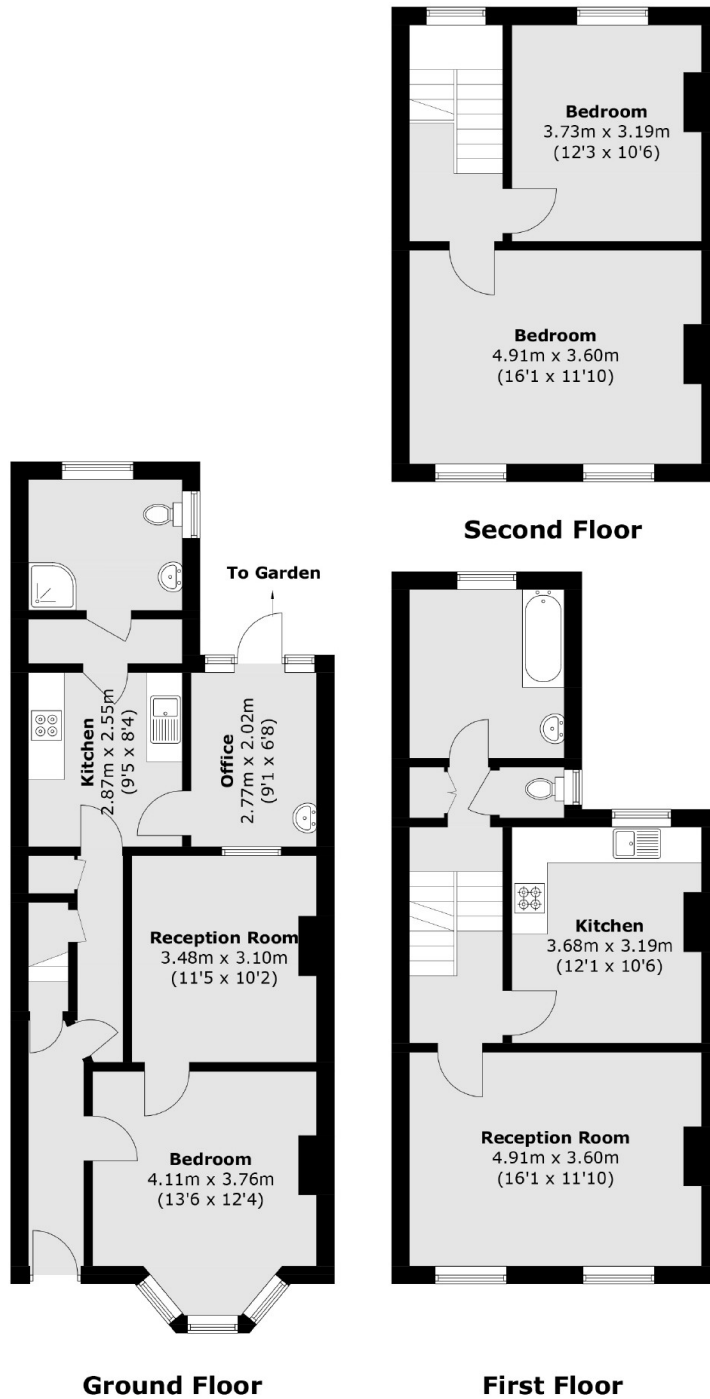
A three/four bedroom Victorian terrace set across three storeys with renovation and extension potential. The property has a private west facing garden, feature fireplaces, two bathrooms, loft space and period features. It is being sold chain free.

Moments from vibrant Chatsworth Road, Lower Clapton Road & Mare Street there are numerous cafes, restaurants to choose from and Sunday Market. The green spaces of Hackney Downs Park, Millfields Park and the Hackney Marshes are nearby. Transport links include Homerton and Hackney Central overground stations offering easy access to the City.

Features

- Victorian Terrace
- Three/Four Bedrooms
- Two Receptions
- Renovation Potential
- Private Garden
- Chatsworth Road
- Chain Free

Median Road, London, E5



Total area (approx.): 141.3 sq. m (1,520.9 sq. ft)

Dexters

Hackney Central
331 Mare Street
Hackney
London
Sales
020 7067 2420

Energy Rating: D. We aim to make our particulars both accurate and reliable. However they are not guaranteed; nor do they form part of an offer or contract. If you require clarification on any points then please contact us, especially if you're traveling some distance to view. Please note that appliances and heating systems have not been tested and therefore no warranties can be given as to their good working order.

 **RICS** | Regulated
Estate Agent
and Letting Agent

[dexters.co.uk](https://www.dexters.co.uk)