



Horton Road, E8

£580,000

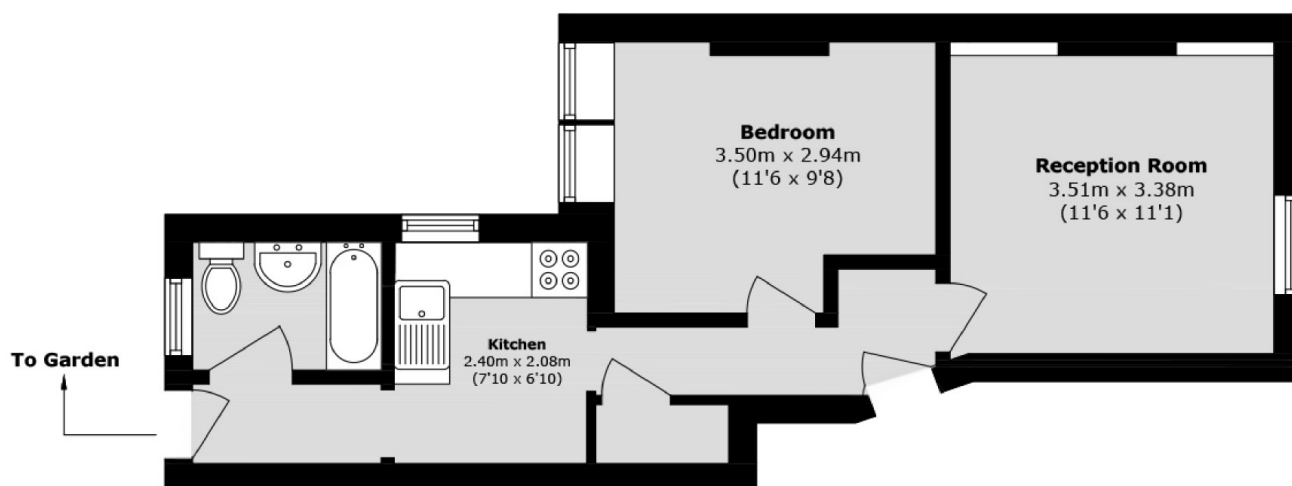
A one bedroom Victorian conversion on a prime road off London Fields with a large private garden. The property retains many of its period features; high ceilings, cornicing, sash windows, and offers a buyer potential to renovate and extend, subject to planning.

Horton Road is located on a quiet residential street around the corner from trendy London Fields and it's Lido and tennis courts. There are endless shops and amenities to choose from including Broadway Market on the weekend, Mare Street and Wilton Way. Hackney Central and Hackney Downs Overground stations are less than half a mile away offering direct access into the City and Highbury & Islington.

Features

- One Bedroom
- Victorian Conversion
- Private Garden
- London Fields
- Potential To Extend STPP

Horton Road, London, E8



Total area (approx.): 37.3 sq. m (401.4sq. ft)