



Clapton Square, E5

£575,000

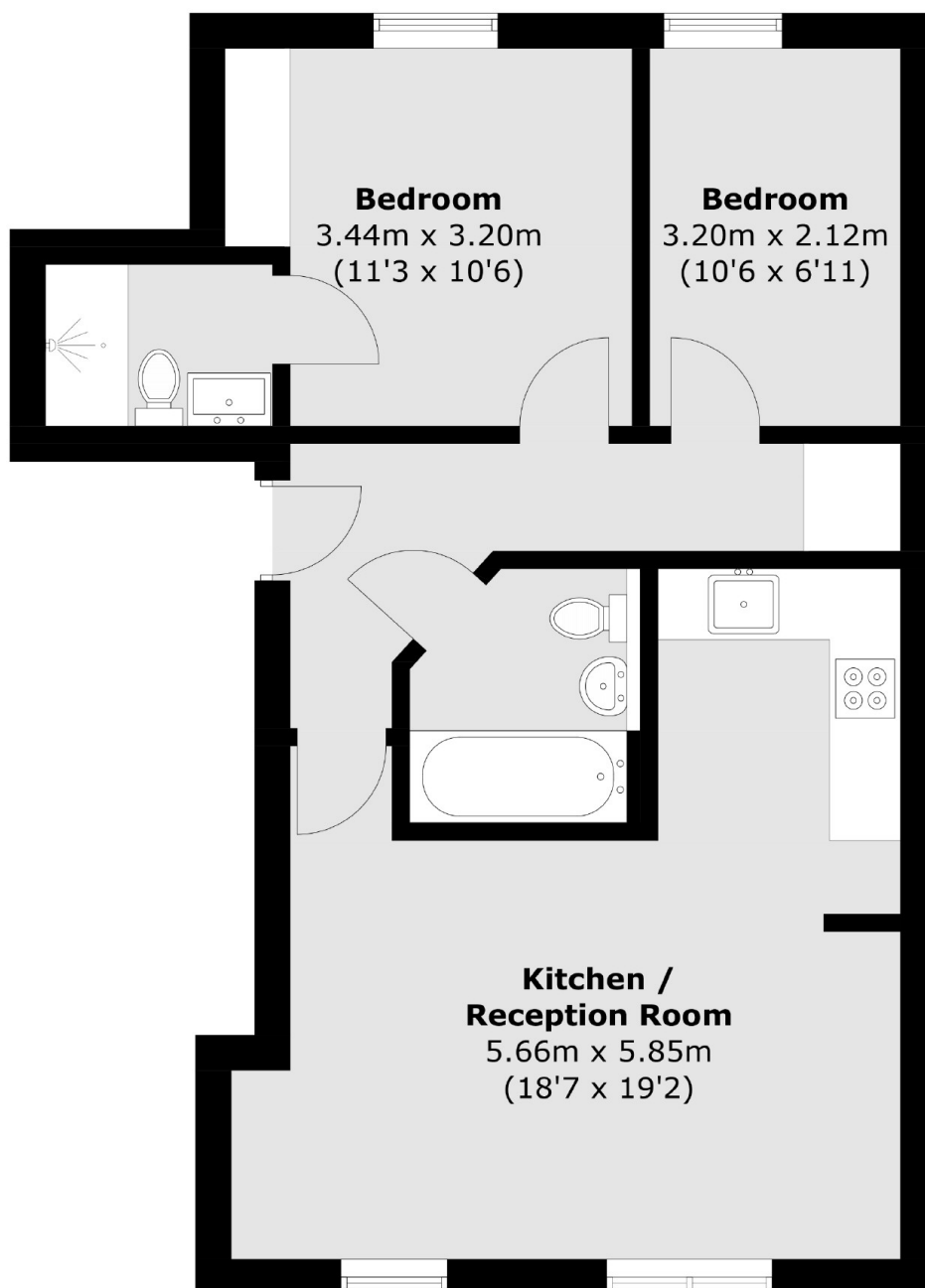
A two double bedroom, two bathroom flat located on the historic Clapton Square. Recently renovated by the current owner, the property features terrazzo tiles, wooden floors, sash windows and Burlington bathroom fixtures. The building has secure entry, bike storage and is located on the first floor.

Clapton Square is close to Hackney Central & Chatsworth Road with endless shops, restaurants and bars to choose from including Uchi, My Neighbours Dumplings & The Square. Hackney Downs Park is less than half a mile away and nearby transport links include Hackney Central & Hackney Downs Overground for easy access to the City.

Features

- Offers Over
- Two Double Bedrooms
- Two Bathrooms
- Recently Renovated
- Purpose Built
- Close To Amenities
- Sash Windows
- Secure Entry System

Clapton Square, London, E5



Total area (approx.): 57.7 sq. m (621.1 sq. ft)

Dexters

Hackney Central
331 Mare Street
Hackney
London
Sales
020 7067 2420

Energy Rating: B. We aim to make our particulars both accurate and reliable. However they are not guaranteed; nor do they form part of an offer or contract. If you require clarification on any points then please contact us, especially if you're traveling some distance to view. Please note that appliances and heating systems have not been tested and therefore no warranties can be given as to their good working order.

 **RICS** | Regulated
Estate Agent
and Letting Agent

[dexters.co.uk](https://www.dexters.co.uk)