



## Farleigh Road, N16

£1,750,000

An exceptional four bedroom terraced house with over 2,500 sq ft of living space on one Stoke Newington's prime roads. The home has been meticulously renovated to a high standard with modern finishes, yet retains many of its period features. It has a large garden with garden studio and is being sold chain free.

Farleigh Road is half a mile to Rectory Road and Dalston Kingsland Overground stations. The many shops, cafés and restaurants of Stoke Newington Church Street, Mare Street and Kingsland High Street are within close proximity as well as Hackney Downs Park.

### Features

Offers Over  
Four Double Bedrooms  
Victorian Terraced House  
Three Bathrooms  
Garden Studio  
Completely Remodelled  
Garden & Courtyard  
Chain Free



## Farleigh Road, N16

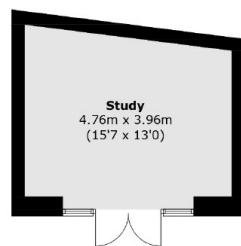
The entrance of the home has a grand hallway with wooden panelling and double doors leading to the first reception room separated by a curved arch. The room has a feature fireplace, exposed brick, bay window, wooden flooring and intricate cornicing. Down a few stairs is a modern family bathroom with free standing tub, walk in shower and chrome finishes.

The lower ground floor has an abundance of space ideal for entertainment; bespoke kitchen with white gloss units, three quartz worktops, Belfast sink, wine fridge and built in appliances. The living room and kitchen is uniquely separated by an internal courtyard with Crittal doors. The second living/reception room has a Korniche Glass Roof Lantern and a wall of Crittal doors leading to the large garden, half paved, half grass and the garden studio. There is underfloor heating throughout this level and a separate W/C. On the top two floors are four double bedrooms and two bathrooms. The larger than average primary bedroom comes with en-suite and sitting area. The loft bedroom has Velux windows and Juliet balcony with views over the garden.

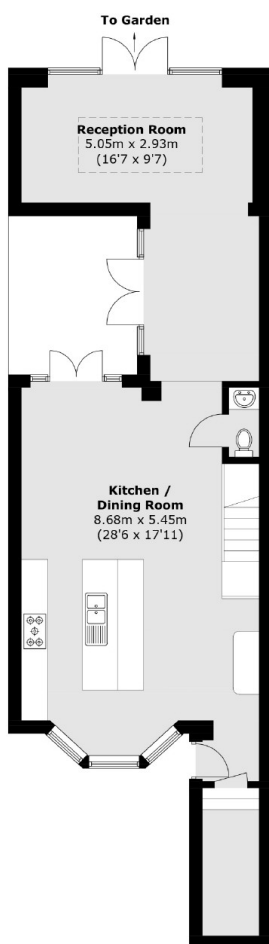




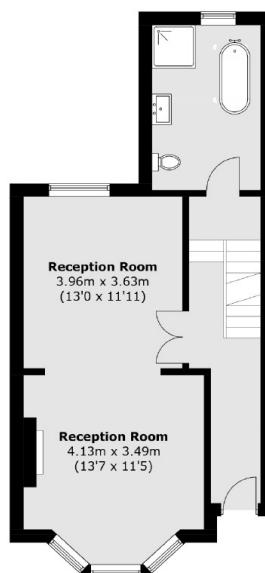
# Farleigh Road, London, N16



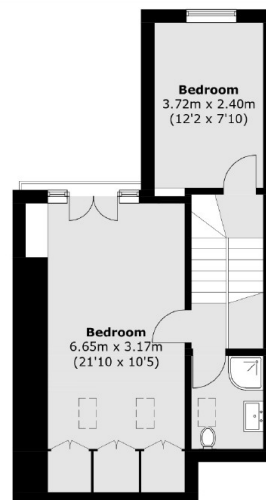
**Outbuilding**  
(Not Shown In Actual  
Location / Orientation)



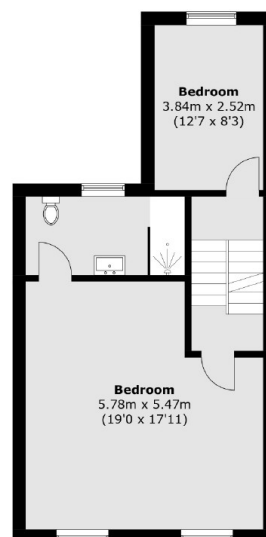
**Lower Ground Floor**



**Raised Ground Floor**



**Second Floor**



**First Floor**

Total area (approx.): 223 sq. m (2,400.3 sq. ft)  
Outbuilding (approx.): 18.2 sq. m (195.9 sq. ft)