



## High Road Leytonstone, E11

### £265,000

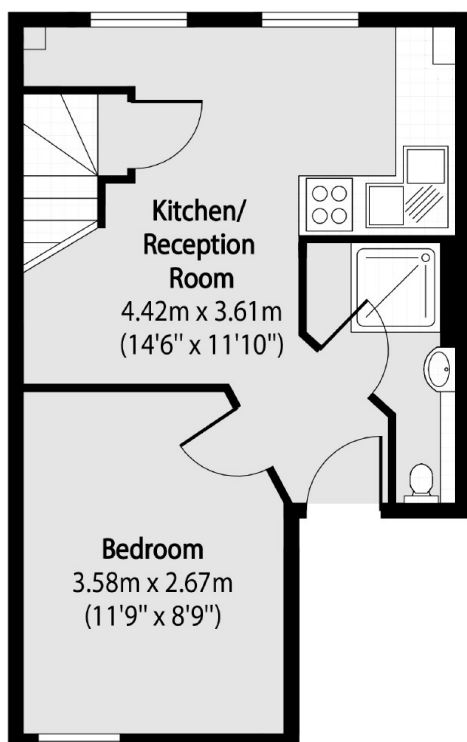
The property comprises of a mid terrace building arranged with a split level top floor flat. The property has an open-plan kitchen and a reception room with a separate utility room.

The property is located on the east side of High Road Leytonstone, close to its junction with Steele Road. Local shops and amenities are available on High Road Leytonstone. The open spaces of Langthorne Park are available within a short walk to the north. Underground services run from Leyton Station (Central Line) and the A12 is within reach. 0.5 Miles to Maryland station which services the Elizabeth line. Direct bus links to Stratford Westfield Shopping Centre.

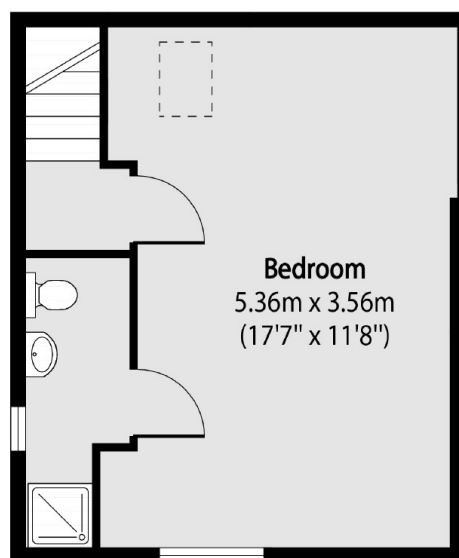
### Features

Offers Over  
Investors  
2 Bedrooms / 2 Bathrooms  
Open Plan Kitchen  
Split Level  
0.6 mile To Leyton Station

# High Road Leytonstone, London, E11



Second Floor



Third Floor

Total area (approx): 51.19 sq m (551 sq. ft)