



Graham Road, E8

£450,000

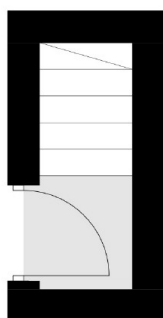
A bright and airy split level period conversion in the heart of Hackney. The property has an open plan kitchen living area with south facing views of the City, wooden floors, sash windows, high ceilings, family bathroom and spacious bedroom to the rear. The flat also has access to a large attic, great for storage or for the potential to extend, subject to permissions.

Graham Road runs between Dalston and Mare Street with many shops, cafes and amenities to choose from including Broadway Market. It is under half a mile from London Fields and its tennis courts and Lido. Hackney Central and Hackney Downs Overground is a quarter of a mile away.

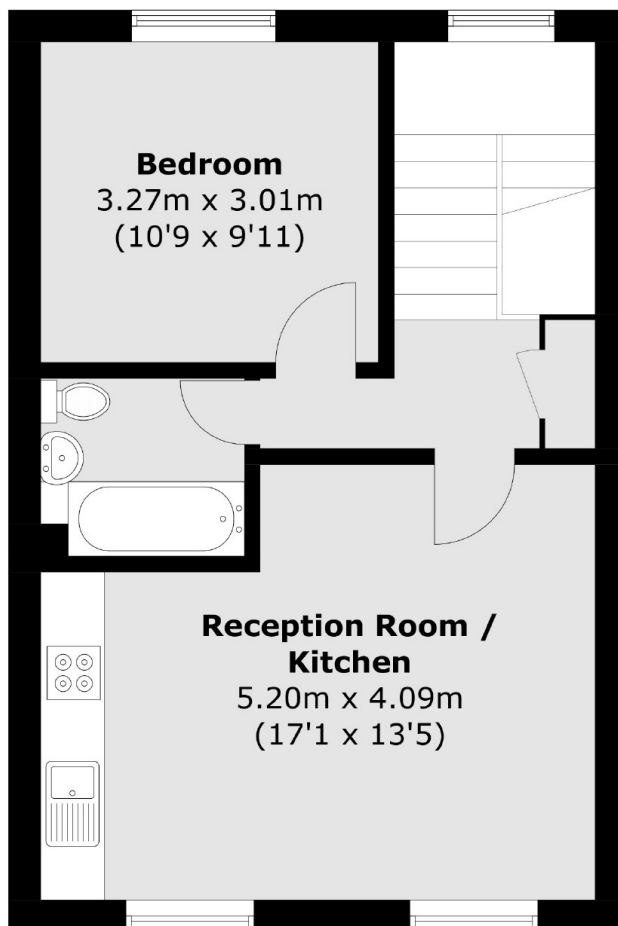
Features

Offers in Excess Of
Victorian Conversion
Top Floor
Split Level
One Double Bedroom
Attic Space
South Facing
London Fields

Graham Road, London, E8



First Floor



Second Floor

Total area (approx.): 44.0 sq. m (473.6 sq. ft)