



Stanford Mews, E8

£825,000

A contemporary three bedroom end of terrace in a gated mews with balcony and off street parking. Set over three storeys the property has been thoughtfully renovated throughout by its current owner and benefits from an East and West facing aspect flooding the property with natural light. It is being sold chain free.

Stanford Mews is located in the heart of Dalston surrounded by a plethora of cafes, restaurants and shops. The property is less than half a mile to Dalston Kingsland, Dalston Junction, Hackney Downs & Hackney Central Stations offering direct transport links to the City and West End. The green spaces of Hackney Downs Park and London Fields are both within half a mile as well with its well known Lido.

Features

Offers In Excess Of
Three Bedrooms
Two Bathrooms
Gated Mews
Freehold
Allocated Parking
Chain Free



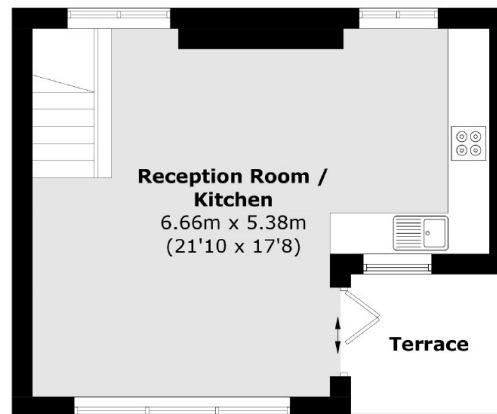
Stanford Mews, E8

The ground floor comprises of a large bedroom with en-suite, utility area and walk in storage cupboard which could double as a walk in wardrobe. The first floor has two bedrooms and family bathroom with white gloss tiles and walk in shower.

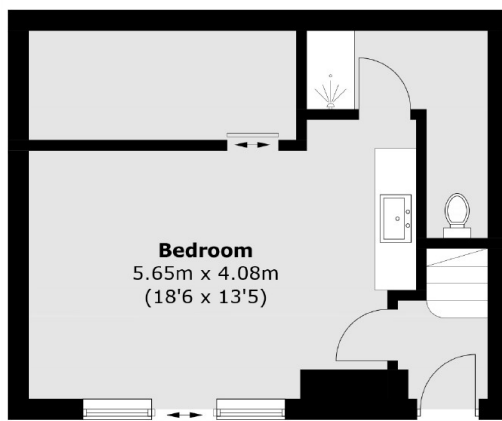
The main living area is situated on the top floor and has a bright, open layout with modern kitchen, floor to ceiling glass windows and a west facing balcony with far reaching views. This freehold home also has live/work usage, an allocated parking space and no onward chain.



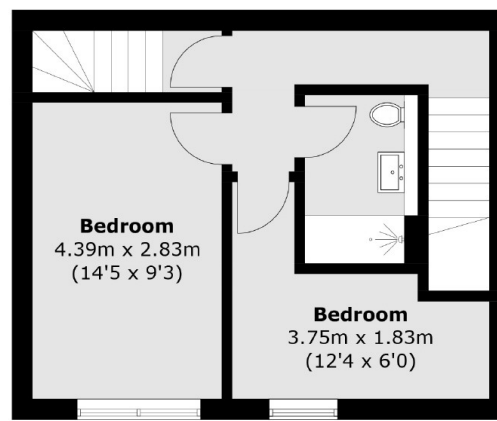
Stanford Mews, London, E8



Second Floor



Ground Floor



First Floor

Total area (approx.): 103.3 sq. m (1,111.8 sq. ft)
Terrace: 4.6 sq. m (49.5 sq. ft)