



## Homerton Road, E9

£375,000

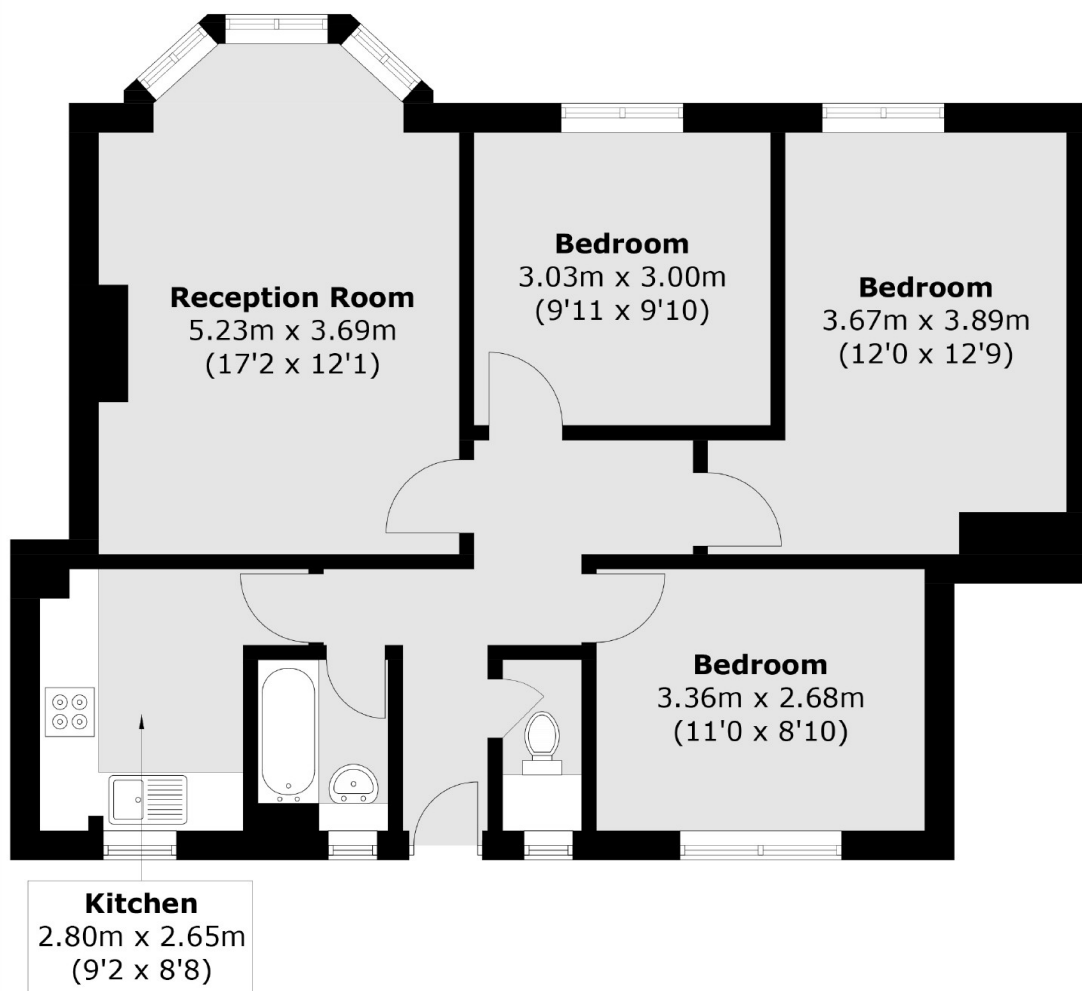
A three bedroom purpose built flat next to Mabley Green, the Hackney Marshes and the River Lea. The property measures over 750sq ft and has a separate kitchen, W/C, double glazed windows and lift access. It has renovation potential and is being sold chain free.

Ashmead House is ideally located next to the green spaces of the Hackney Marshes, the River Lea, Victoria Park and Queen Elizabeth Park offering many opportunities for outdoor activities. Both Homerton and Hackney Wick Overground Stations are under a mile away for easy access to the rest of London. Chatsworth Road is also within easy reach with its' many cafes, shops and Sunday Market.

### Features

Offers Over  
Three Bedrooms  
Over 750 sq ft  
Ideal for Buy-To-Let  
Chain Free  
Separate Kitchen  
Lift Access  
Hackney Marshes

# Homerton Road, London, E9



Total area (approx.): 70.3 sq. m (756.7 sq. ft)