



Speechly Mews, E8 £800,000

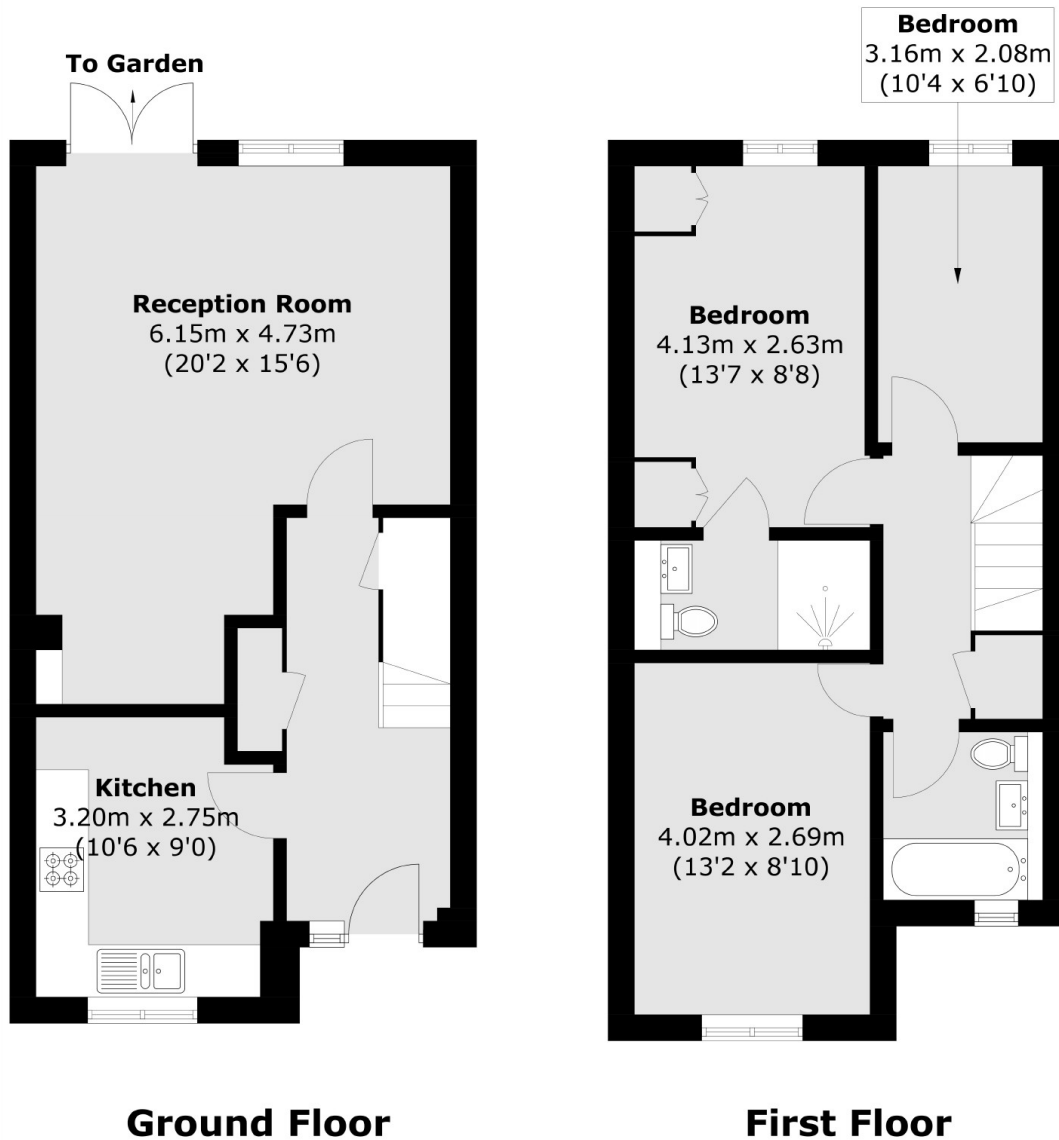
A three bedroom freehold mews home with a private garden in the heart of Dalston. The property is located in a small secure development with residents parking, and has a separate kitchen, south facing aspect, wooden floors, loft space and plenty of storage. It is being sold chain free.

Speechly Mews is located down a private laneway off Alvington Crescent. There are numerous bus and train links nearby including Dalston Kingsland, Dalston Junction, Hackney Downs and Hackney Central; all half a mile away or less. The property is surrounded by many cafes, shops and restaurants found on Stoke Newington Road, Kingsland High Street and Dalston Lane.

Features

Offers Over
Three Bedrooms
Freehold
Secure Development
Residents Parking
Chain Free
South Facing Garden

Speechly Mews, London, E8



Total area (approx.): 86.0 sq. m (925.6 sq. ft)