



Kenworthy Road, E9

£750,000

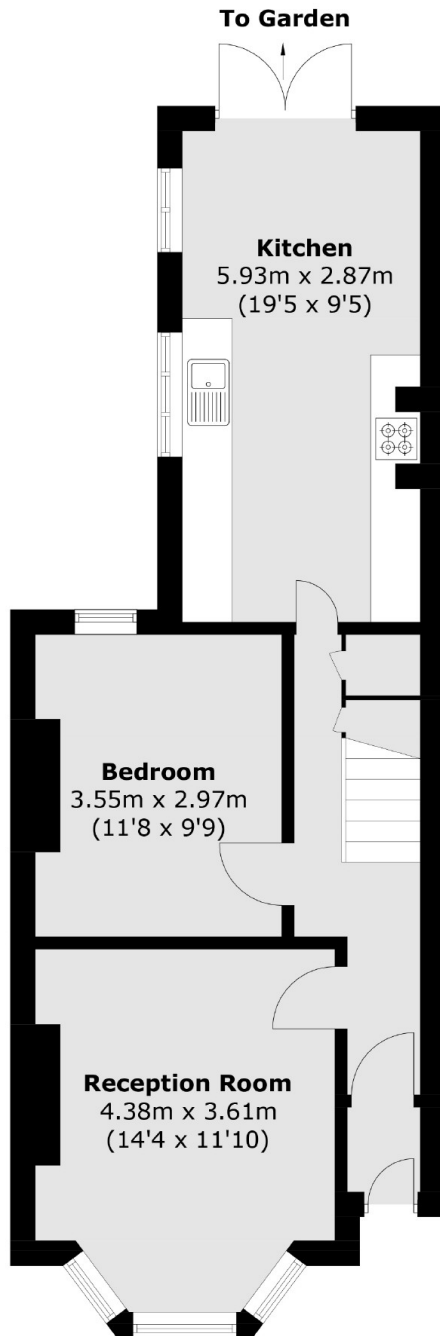
A three bedroom Victorian terrace within close proximity to Victoria Park. The home measures over 1000 sq ft and has potential to extend into the loft and side return, subject to planning. It benefits from having wooden floors, bay window, south facing garden and large family bathroom. It is being sold chain free.

Kenworthy Road is under a quarter of a mile from Victoria Park and Chatsworth Road with its weekend markets and shops, cafés and restaurants. The property is half a mile from Homerton Overground and just over half a mile from Hackney Wick station. The Hackney Marshes are under one mile away providing many opportunities for outdoor recreation.

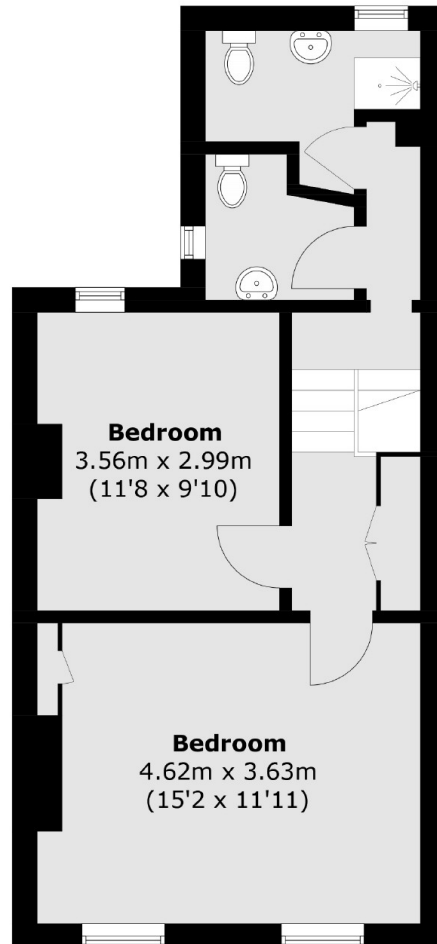
Features

- Three Double Bedrooms
- Private South Facing Garden
- Freehold
- Victoria Park
- Chain Free
- Victorian Terrace
- Potential To Extend STPP

Kenworthy Road, London, E9



Ground Floor



First Floor

Total area (approx.): 95.8 sq. m (1,031.1 sq. ft)