



Homerton Road, E9

£550,000

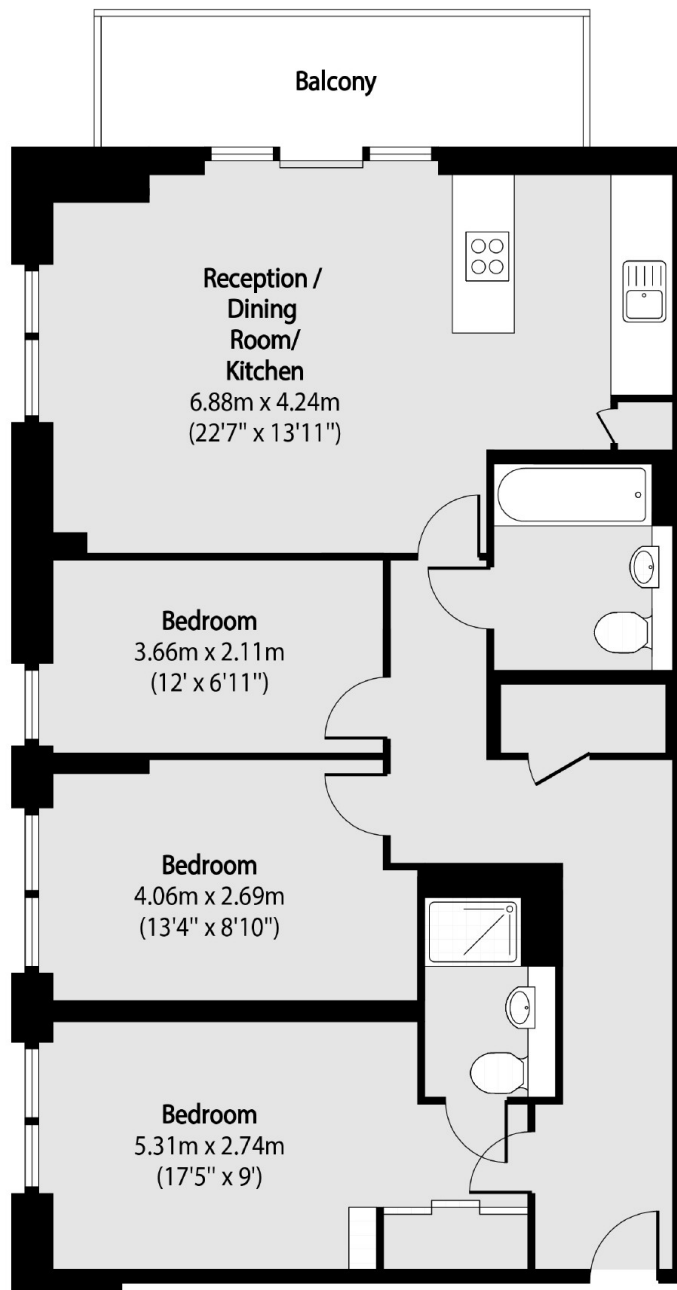
A three double bedroom, two bathroom apartment measuring over 900 sq ft in a modern development with unobstructed views of the River Lea and Hackney Marshes. The property benefits from an open plan kitchen, floor to ceiling windows, en-suite, gym, 24 hour concierge, balcony and allocated parking space. It is being sold chain free.

The property is situated next to the River Lea, Springfield Park and the Hackney Marshes providing many opportunities for outdoor recreation. Homerton and Hackney Wick Overground Stations are just over half a mile and Stratford is just over half a mile offering excellent transport links to the rest of London and beyond.

Features

Offers Over
Three Double Bedrooms
Two Bathrooms
Allocated Parking
Private Balcony
Concierge & Gym
Over 900 sq ft
Canal and Park Views

Homerton Road, London, E9



Total area (approx): 84.72 sq m (912 sq. ft)

Balcony total area (approx): 7.71 sq m (83 sq. ft)