



Chatsworth Road, E5

£650,000

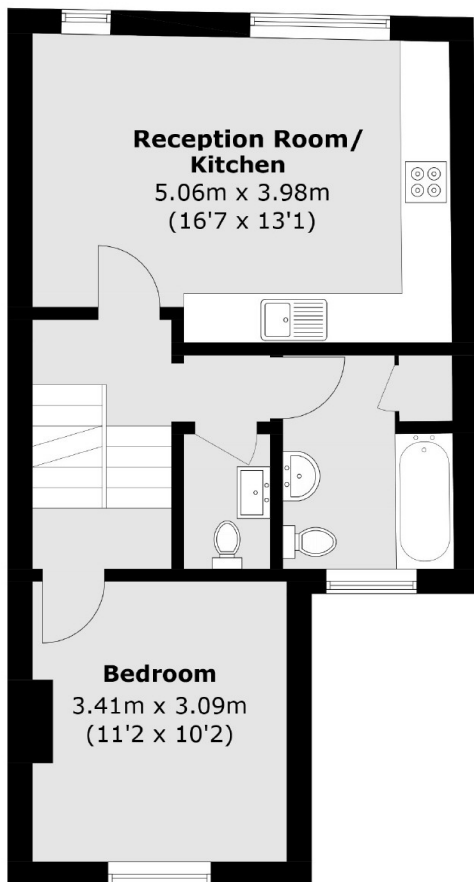
A three double bedroom flat measuring just under 900 sq ft across the top two floors of a Victorian conversion. There is an open plan kitchen living area, family bathroom & separate W/C with underfloor heating and three double bedrooms. The property is being sold with a new 125 lease and no onward chain.

Located on Clapton's most well known road there is an abundance of independent shops, cafes and restaurants on your doorstep. The green spaces of Millfields Park and Hackney Marshes are down the street offering many opportunities for outdoor recreation. Homerton Overground is half a mile away and Clapton, Hackney Downs & Hackney Central Overground stations are all under one mile away providing easy access to the rest of London.

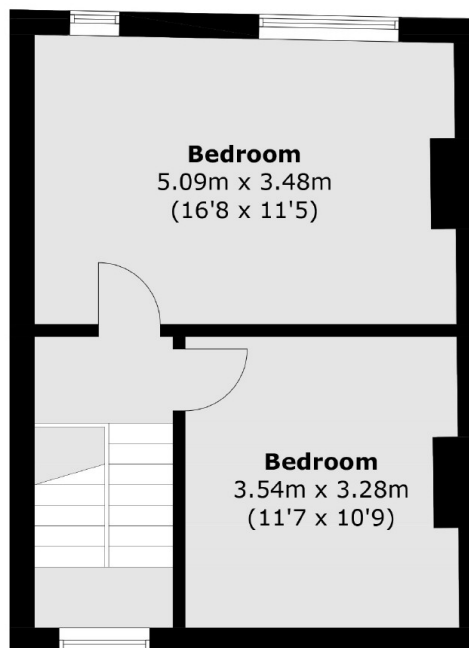
Features

Offers Over
Three Double Bedrooms
Period Conversion
Three Storeys
Chain Free
New Long Lease
Over 900sq ft

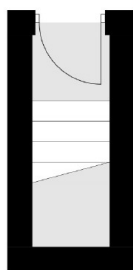
Chatsworth Road, London, E5



First Floor



Second Floor



Ground Floor

Total area (approx.): 83.1 sq. m (894.4 sq. ft)