

Sutton Square, E9

£500,000

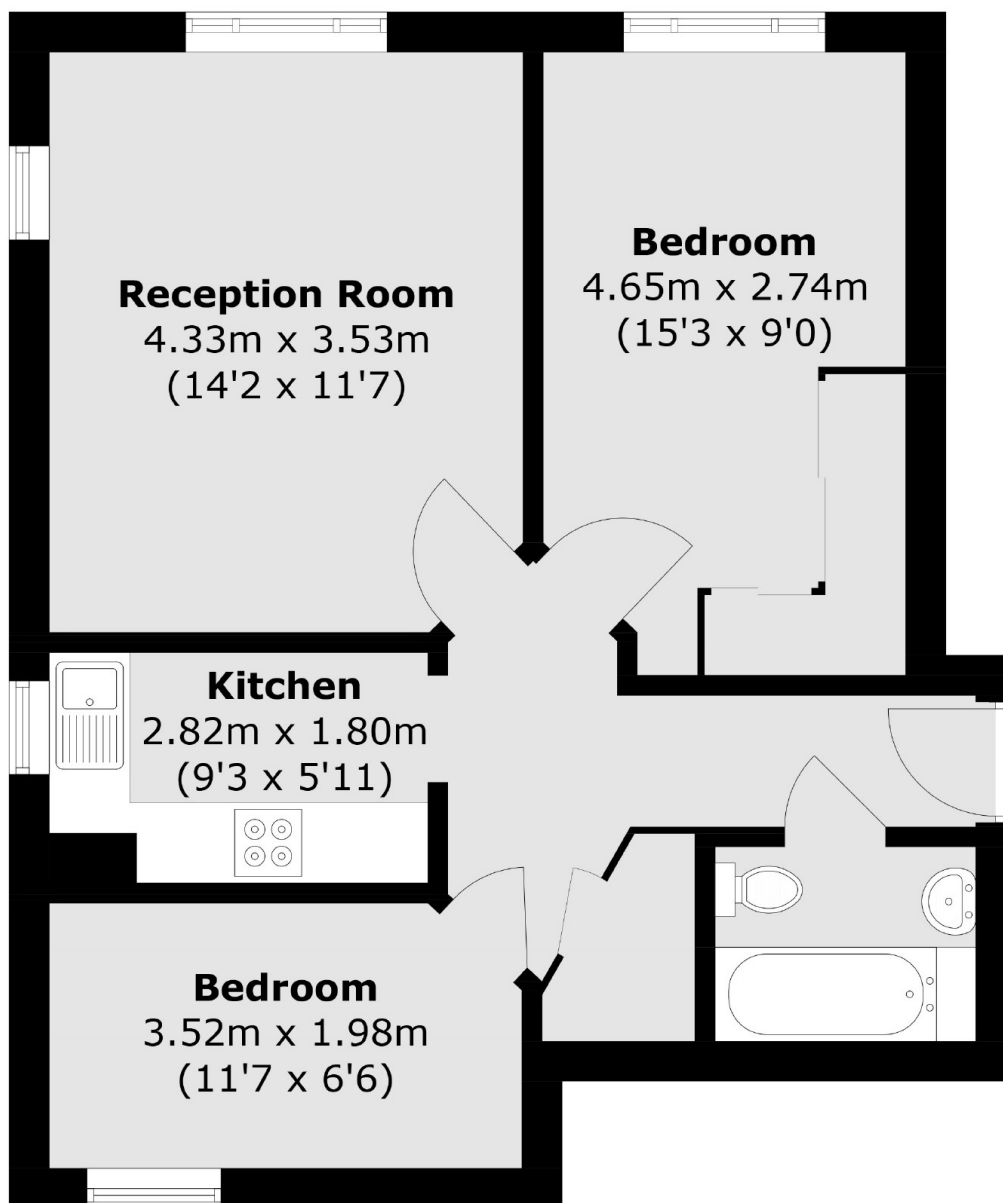
A two double bedroom apartment located in the award winning Sutton Square development. The apartment is in excellent condition and benefits from having access to communal garden, a long lease and being within the Clapton Square Conservation Area.

Sutton Square is located next to St John's Hackney Church and its' gardens. The property is under half a mile from Hackney Central and Hackney Downs Overground Stations offering direct trains to Liverpool Street, Stratford, Highbury & Islington. The many restaurants, cafes and shops of Mare Street and Broadway Market are within walking distance.

Features

Offers Over
Two Double Bedrooms
Award Winning Development
Communal Gardens
Conservation Area
Secure Entry
Long Lease

Sutton Square, London, E9



Total area (approx.): 51.9 sq. m (558.6 sq. ft)