



## Sutton Square, E9

£575,000

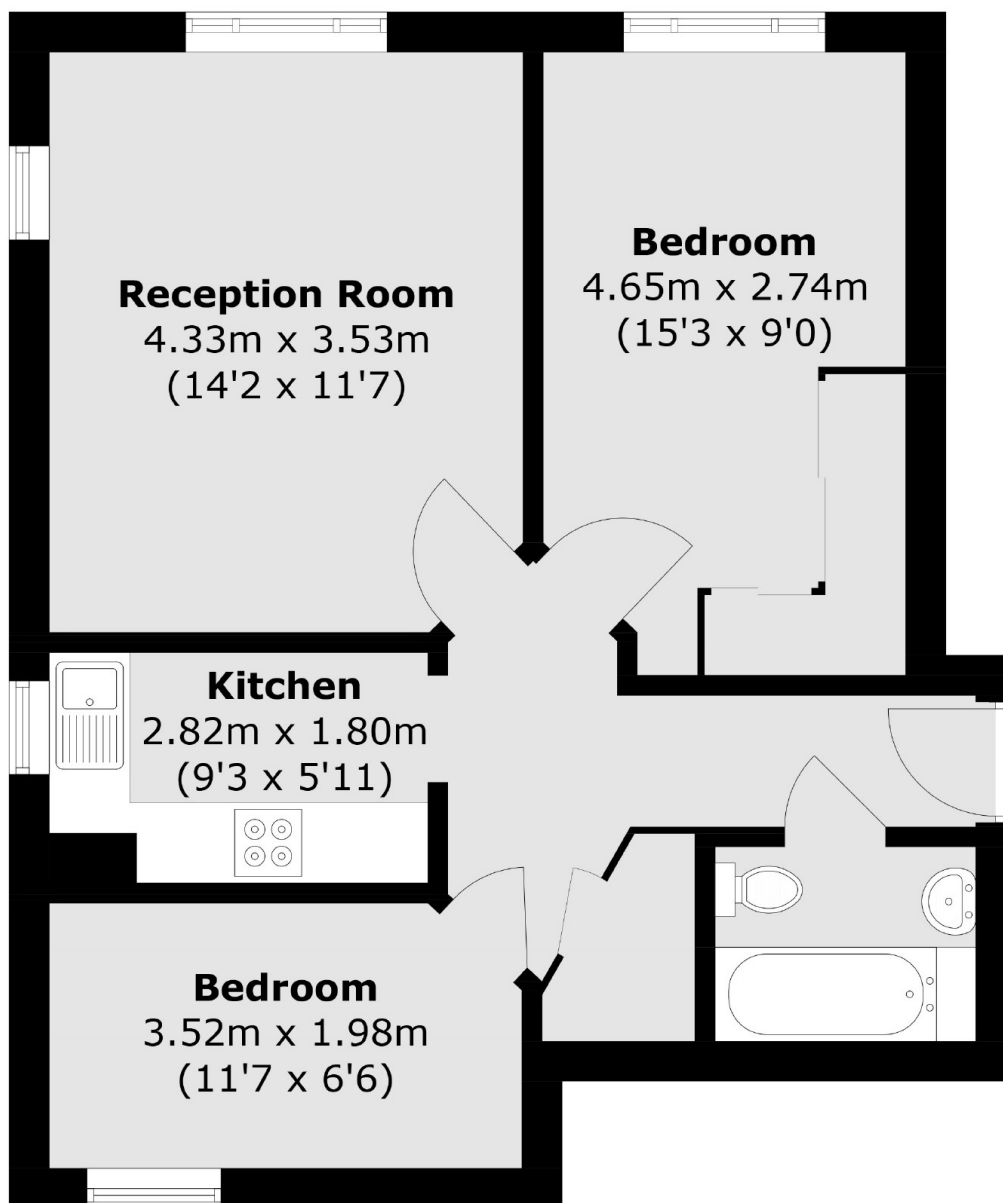
A two double bedroom apartment located in the award winning Sutton Square development. The apartment is in excellent condition and benefits from having access to communal garden, a long lease and being within the Clapton Square Conservation Area.

Sutton Square is located next to St John's Hackney Church and its' gardens. The property is under half a mile from Hackney Central and Hackney Downs Overground Stations offering direct trains to Liverpool Street, Stratford, Highbury & Islington. The many restaurants, cafes and shops of Mare Street and Broadway Market are within walking distance.

### Features

- Two Double Bedrooms
- Award Winning Development
- Communal Gardens
- Conservation Area
- Secure Entry
- Long Lease

# Sutton Square, London, E9



Total area (approx.): 51.9 sq. m (558.6 sq. ft)