



## Evering Road, E5

£550,000

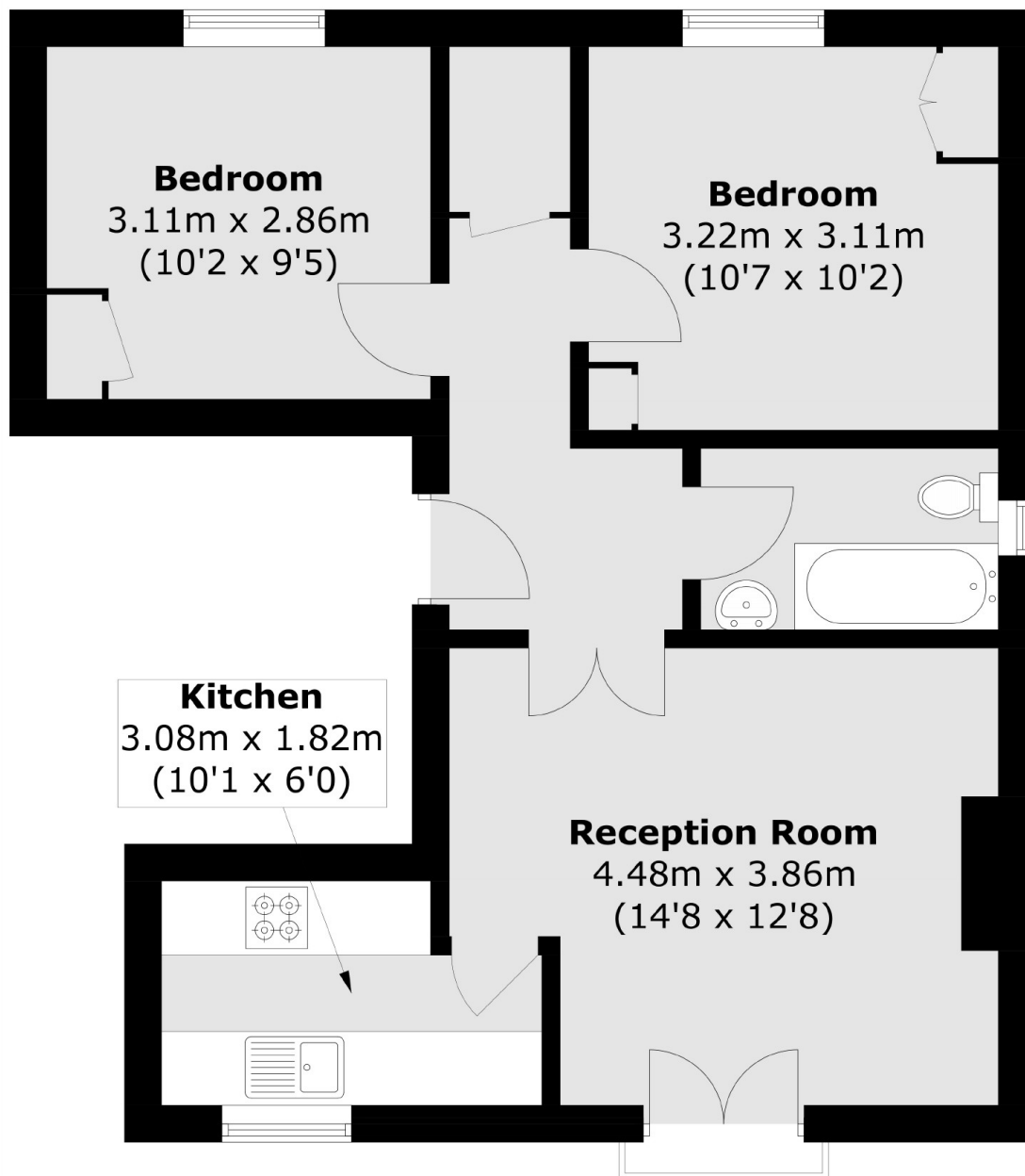
A two double bedroom Victorian conversion situated on Evering Road, in the sought-after E5 neighbourhood. The property has high ceilings, sash windows, galley kitchen, ornate feature fireplace and south facing Juliet balcony. It is being sold with a Share of the Freehold.

The property is 500 ft from Clapton Overground station providing direct trains into Liverpool Street Station for access to the rest of London and the UK. The many shops, cafes, pubs, restaurants of Stoke Newington Church Street, Upper Clapton Road and Chatsworth Road are within walking distance. Millfields Park, the River Lea and Walthamstow Marshes are under one mile away providing many opportunities for outdoor recreation. The property is within the catchment area of many Ofsted outstanding primary & secondary schools.

### Features

- Two Double Bedrooms
- Period Conversion
- Share of Freehold
- Juliet Balcony
- High Ceilings
- Close To Transport

# Evering Road, London, E5



## First Floor

Total area (approx.): 52.1 sq. m (560.8 sq. ft)