



Homerton Road, E9

£485,000

This two-bed, two-bath apartment is located on the top of this south-facing aspect property, just moments from Hackney Marshes' green spaces.

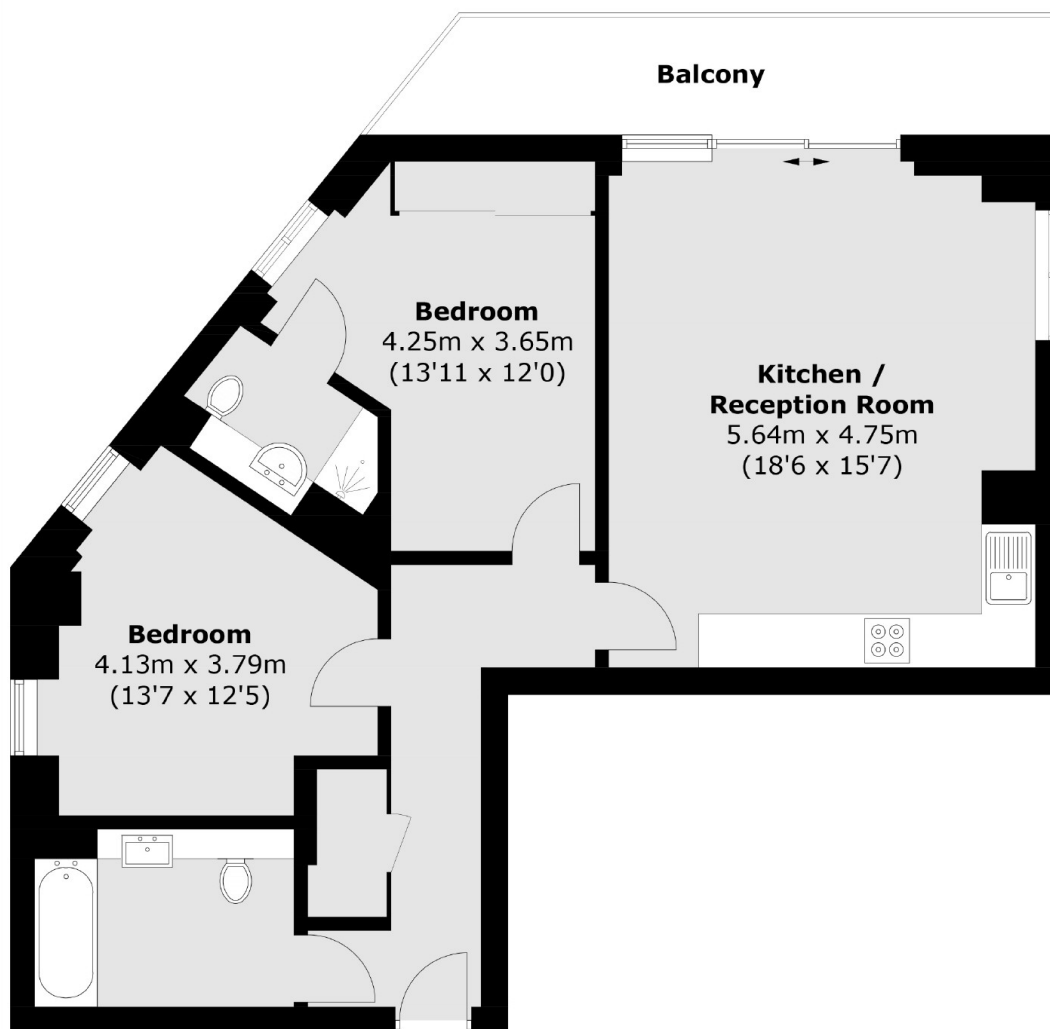
The canal-side property features an open-plan living area with a fitted kitchen leading to a large balcony with surrounded views of the canal and marshes, as well as unobstructed views of Central London and its iconic landmarks. Both double bedrooms are full of natural light and the main bedroom has an en-suite. Residents can enjoy the gym, communal roof terrace, 24-hour concierge, and an allocated underground secure parking space.

Nearby amenities include Chatsworth Road and Hackney Wick's trendy independent bars and restaurants, Hackney Marshes, and The Queen Elizabeth Olympic Park. Homerton and Hackney Wick Overground Stations and great bus links are within walking distance.

Features

- Offers In Excess Of
- Gymnasium
- Underfloor Heating
- 24 hour Concierge
- South Facing Balcony
- Communal Roof Terrace
- Underground Car Parking

Homerton Road, London, E9



Total area (approx.): 73.2 sq. m (787.9 sq. ft)
Balcony: 9.4 sq. m (101.2 sq. ft)

Dexters

Hackney Central
331 Mare Street
Hackney
London
Sales
020 7067 2420

Energy Rating: B. We aim to make our particulars both accurate and reliable. However they are not guaranteed; nor do they form part of an offer or contract. If you require clarification on any points then please contact us, especially if you're traveling some distance to view. Please note that appliances and heating systems have not been tested and therefore no warranties can be given as to their good working order.

 **RICS** | Regulated
Estate Agent
and Letting Agent

dexters.co.uk