



Digby Road, E9

£800,000

Dexters



Digby Road, E9

A unique warehouse conversion measuring over 1175 sq ft within Digbyland Studios. The property has bespoke carpentry, exposed brick, engineered wood flooring, cast iron windows and a 34' open plan living space. Converted in the early 2000's the property comes with an allocated parking space and a share of the freehold. It is being sold chain free.

An apartment with this size living space is rare to find in Hackney. There are many unique features with cast iron windows and exposed brick curved ceiling. Situated on the raised ground floor there are two double bedrooms at either end of the 34' long reception room with fitted bar and semi-open plan kitchen. The bathroom has built in cabinetry and cast iron bathtub.

There is a third room currently being used as a sleeping room but offers versatility to a buyer.

An allocated parking space and a Share of the Freehold is being sold with the property.

Digbyland Studios is located off Digby Road 100ft from Homerton Overground Station offering direct trains to Stratford and the Elizabeth Line. The many shops, restaurants and Sunday Market on Chatsworth Road and Mare Street are half a mile away.

Features

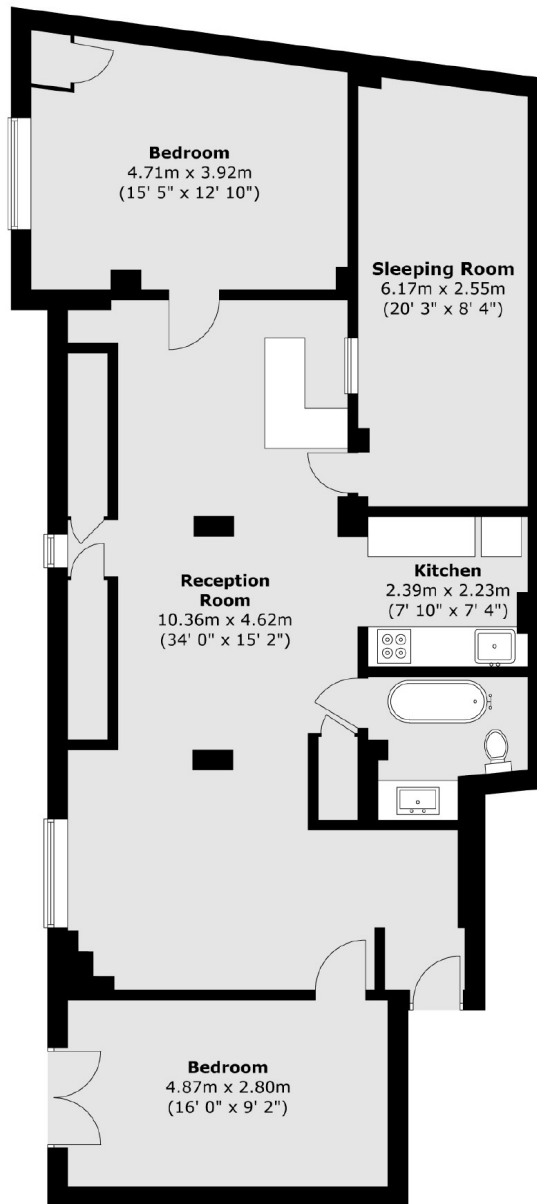
- Warehouse Conversion
- Two Double Bedrooms +
Sleeping Room
- 34' Reception Room
- Share of Freehold
- Chain Free







Digby Road, London, E9



Total area (approx.) : 109.3 sq. m (1176 sq. ft)