



Mothers Square, E5

£450,000

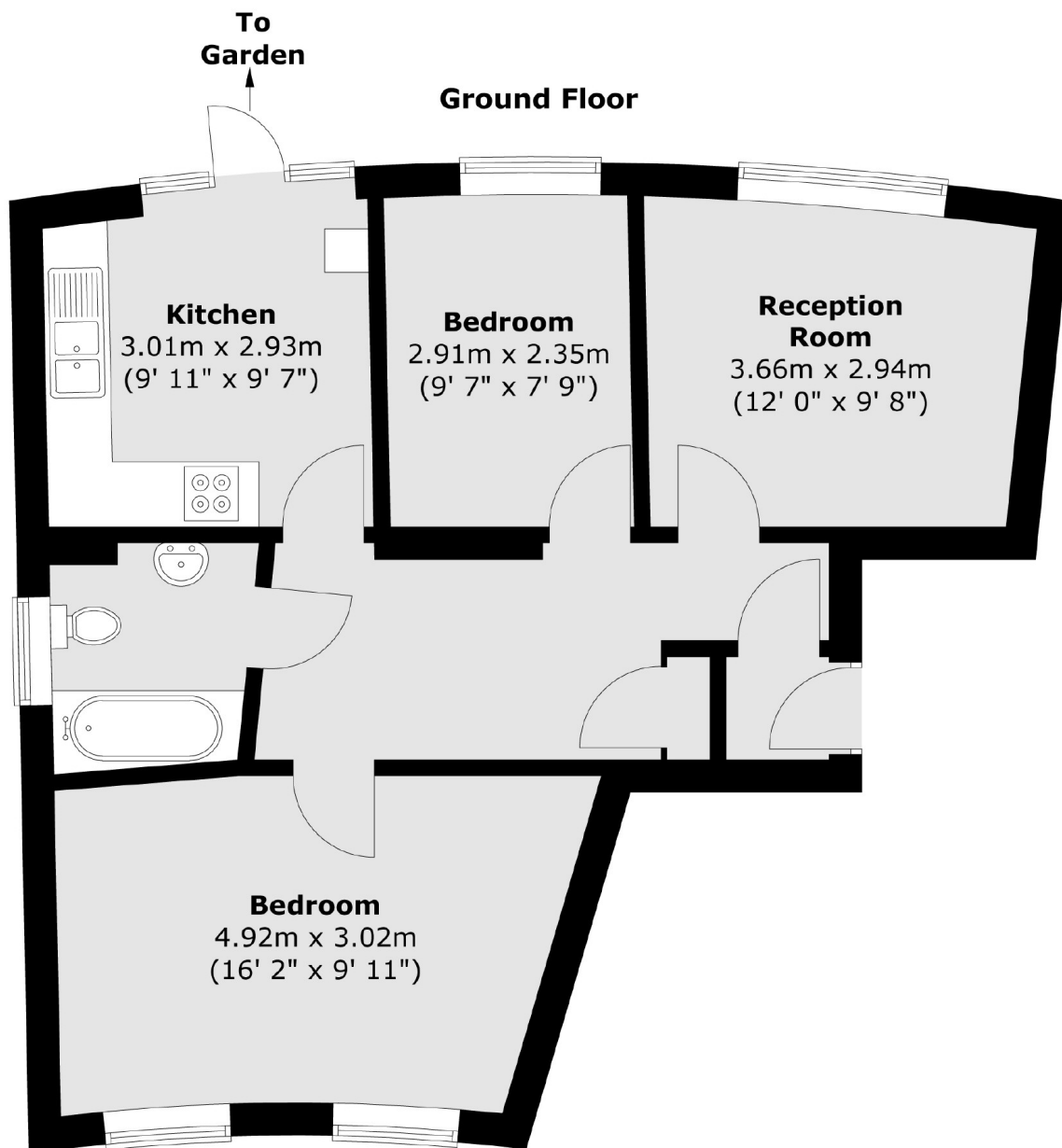
A two double bedroom garden flat within the secure development Mothers Square in Lower Clapton. Designed by architect Edward Burd in 1990 the property offers residents parking, separate kitchen, reception room, family bathroom and no onward chain.

Mothers Square is ideally located amongst many green spaces, shops, restaurants and transport links. Hackney Downs Park is under a quarter of a mile away and Millfields Park is over half a mile away. Lower Clapton Road, Mare Street and Chatsworth Road are all within walking distance and Hackney Downs and Hackney Central Overground Stations are half a mile away providing direct access into Liverpool Street.

Features

- Offers In Excess Of
- Two Double Bedrooms
- Private Garden
- Chain Free
- Hackney Downs Park
- Gated Development
- Residents Parking

Mothers Square, London, E5



Total area (approx.) : 57.4 sq. m (618 sq. ft)