



## St. Mark's Rise, E8

£550,000

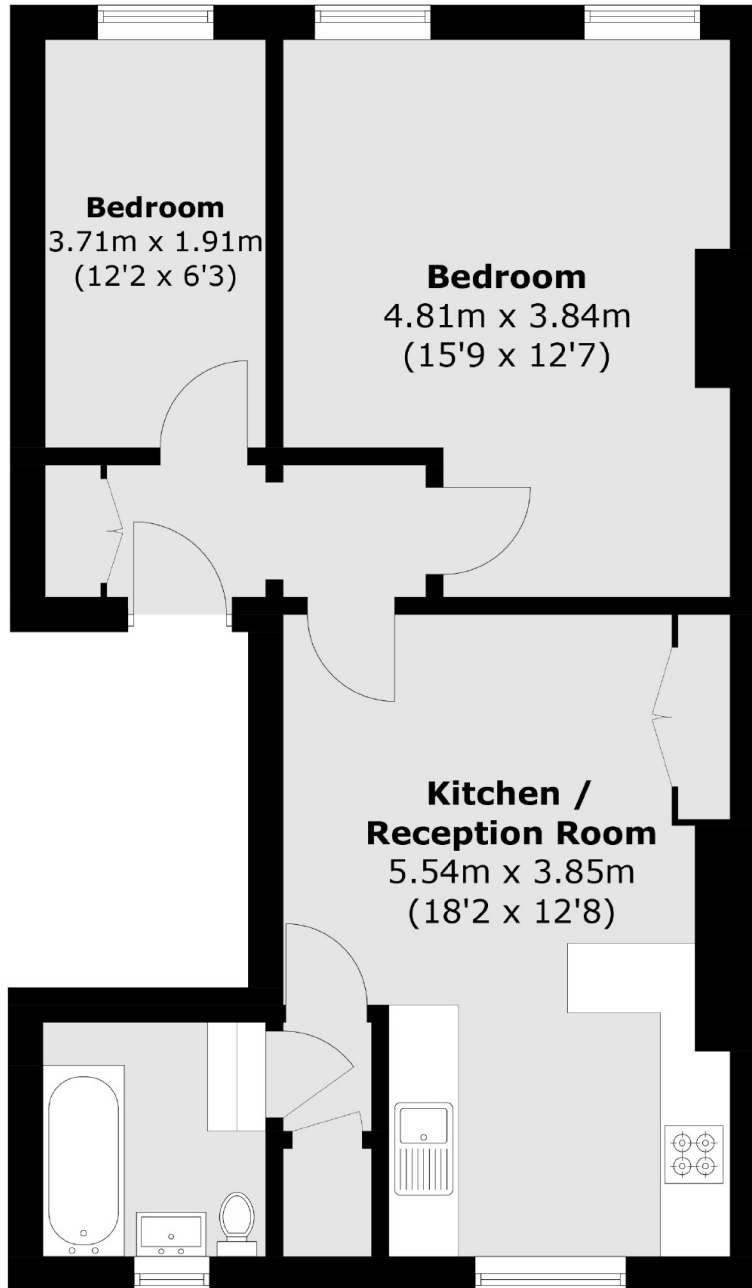
A two double bedroom period conversion in central Dalston. Located within a Victorian home the property has an open plan kitchen & living room, family bathroom, original sash windows, high ceilings and lovely views overlooking St. Marks Church. The property is being sold chain free.

St. Mark's Rise is located less than half a mile away from Ridley Road, Mare Street and Kingsland High Street with an abundance of cafés, restaurants and local amenities. Dalston Kingsland, Dalston Junction and Hackney Downs Overground stations are all half a mile away providing easy access to the rest of the City. There are numerous bus routes also available on Kingsland High Street a quarter of a mile away.

### Features

- Two Double Bedrooms
- Victorian Conversion
- High Ceilings
- Sash Windows
- Close to Transport & Amenities
- Chain Free

# St. Mark's Rise, London, E8



Total area (approx.): 54.6 sq. m (587.7 sq. ft)