



Dunlace Road, E5

£775,000

Dexters



Dunlace Road, E5

A split level period conversion with a private south facing garden moments from Chatsworth Road. The property has been modernised throughout yet retains many of its original period features and is being sold with a Share of the Freehold.

Entering on street level, the ground floor consists of a large open plan kitchen and living room with bespoke kitchen, wooden flooring, feature fireplace, bay window, cornicing and high ceilings. There is access to the garden from this level and a modern bathroom.

Downstairs are two double bedrooms with custom storage and light fixtures. The principal bedroom has a built in dresser, free-standing bath underneath the bay window and separate en-suite with walk in shower and marble tiles. The second bedroom has direct access to the garden through french glass doors. The property sits within the catchment area of many outstanding primary and secondary schools.

Dunlace Road is a quiet residential street 500ft from the ever popular Chatsworth Road and it's many eateries, shops and Sunday Market. The green spaces of Millfields Park, Hackney Downs Park and the Hackney Marshes are all within walking distance and Hackney Central & Homerton Overground Stations are both less than a mile away offering easy access to the rest of London.

Features

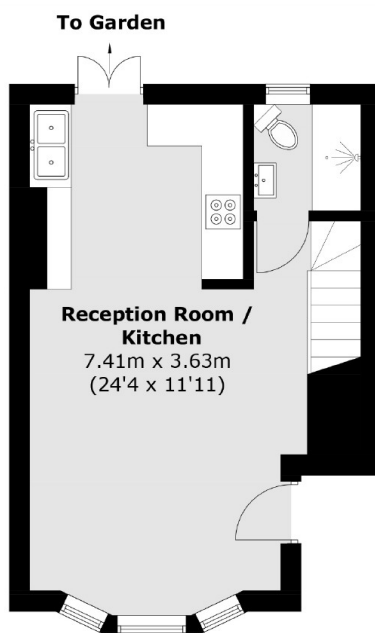
- Offers in Excess of
- Two Double Bedrooms
- Two Bathrooms
- Split Level
- Period Conversion
- Share of Freehold



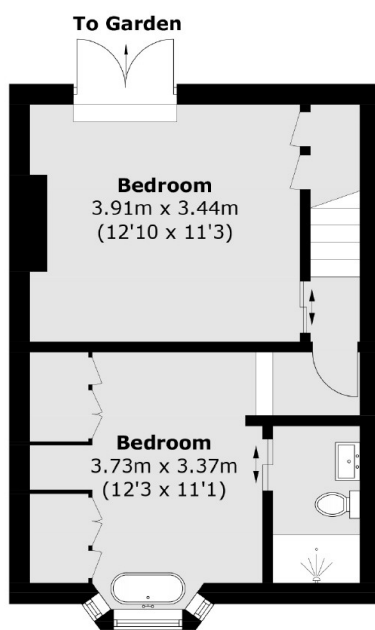




Dunlace Road, London, E5



Ground Floor



Lower Ground Floor

Total area (approx.): 65.3 sq. m (702.7 sq. ft)