



Dunn Street, E8

£550,000

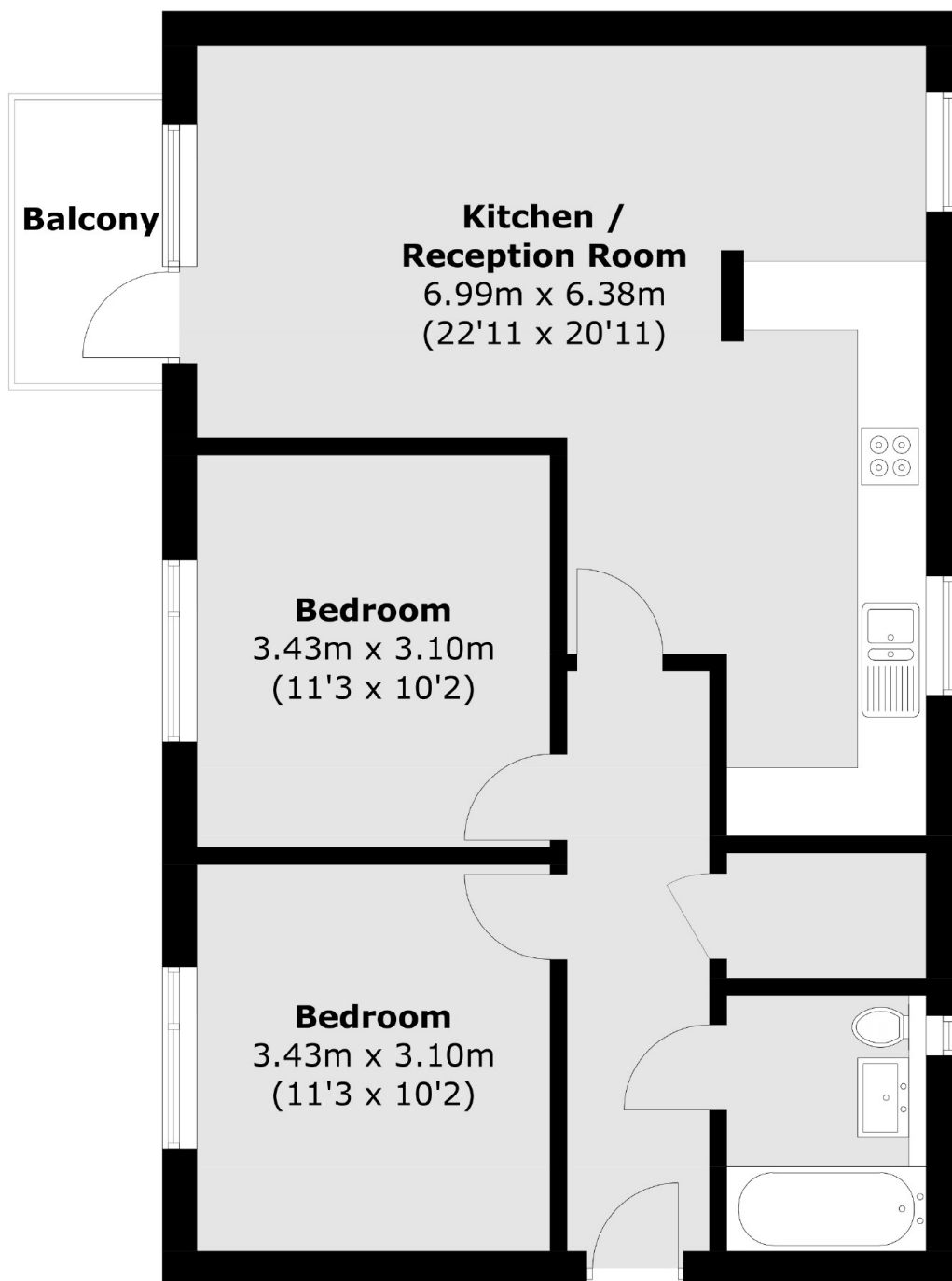
A two double bedroom apartment with south facing balcony in the heart of Dalston. Located on the top floor of a secure development the property benefits from a spacious open plan living area, double aspect, modern bathroom and built in storage. It is being sold chain free.

Rendles Court is located on a one way street located off Shacklewell Lane and around the corner from Kingsland High Street with its numerous cafes and local shops. The property is only a quarter of a mile away from Dalston Kingsland and Dalston Junction Overground Stations, providing excellent links into the City. The green spaces of Hackney Downs Park are within walking distance.

Features

- Offers In Excess Of
- Top Floor
- Open Plan
- Gated Development
- Private Balcony
- Built in Storage
- Chain Free

Dunn Street, London, E8



Total area (approx.): 68.1 sq. m (733.0 sq. ft)

Balcony (approx.): 3.2 sq. m (34.4 sq. ft)