



## Riverside Close, E5

£475,000

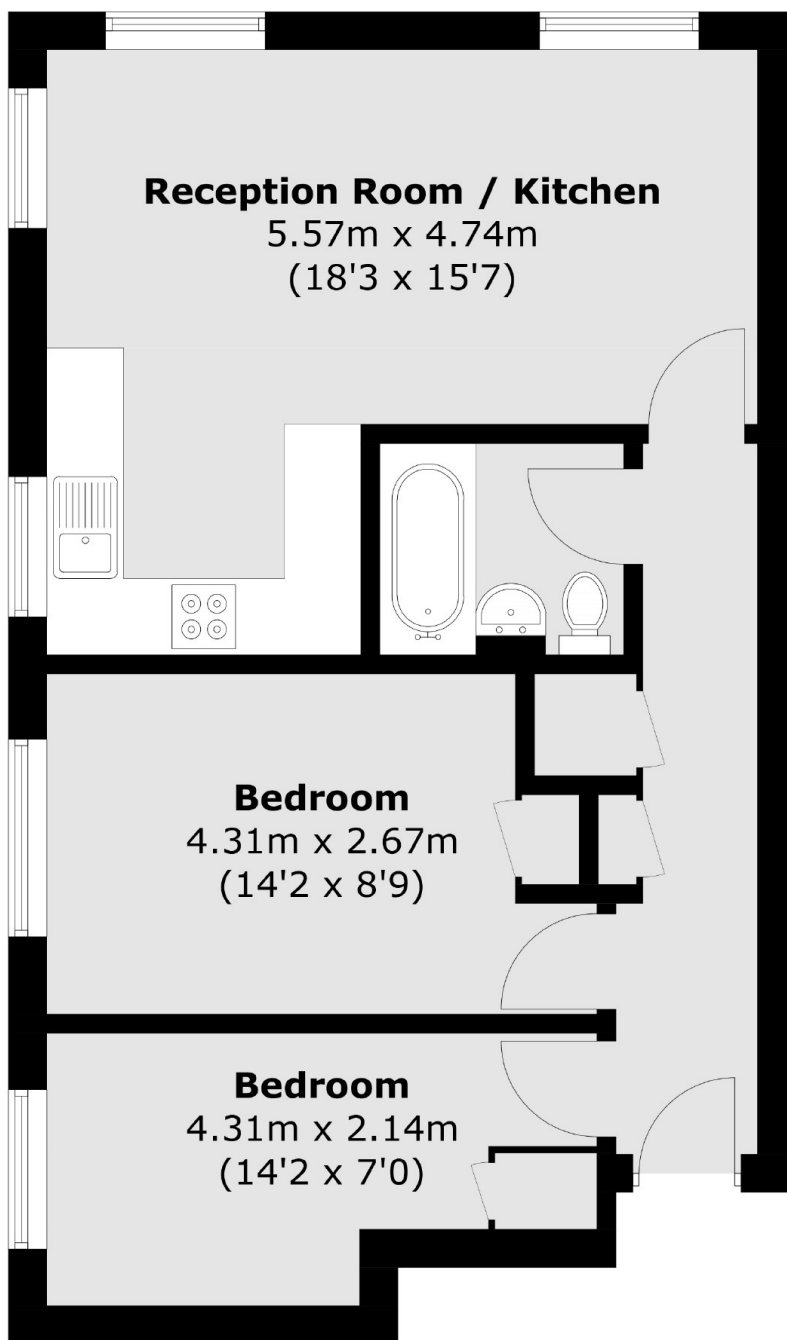
A two double bedroom apartment with unobstructed views from every room of the River Lea and Hackney Marshes. The property is located within a private development with an open plan kitchen living area, built in storage and family bathroom. It is being offered chain free, with an allocated parking space and a Share of the Freehold.

Riverside Close is half a mile away to Clapton Overground Station offering direct access into Liverpool Street. The development is situated next to the River Lea, Walthamstow and Hackney Marshes providing many opportunities for outdoor recreation. Chatsworth Road and it's Sunday Market is under one mile away.

### Features

- Two Double Bedrooms
- Canal Views
- Allocated Parking Space
- Chain Free
- Share of Freehold
- Communal Gardens
- Hackney Marshes

# Riverside Close, London, E5



## First Floor

Total area (approx.): 52.4 sq. m (564.0 sq. ft)