

## Homerton Road, E9

£750 Per week

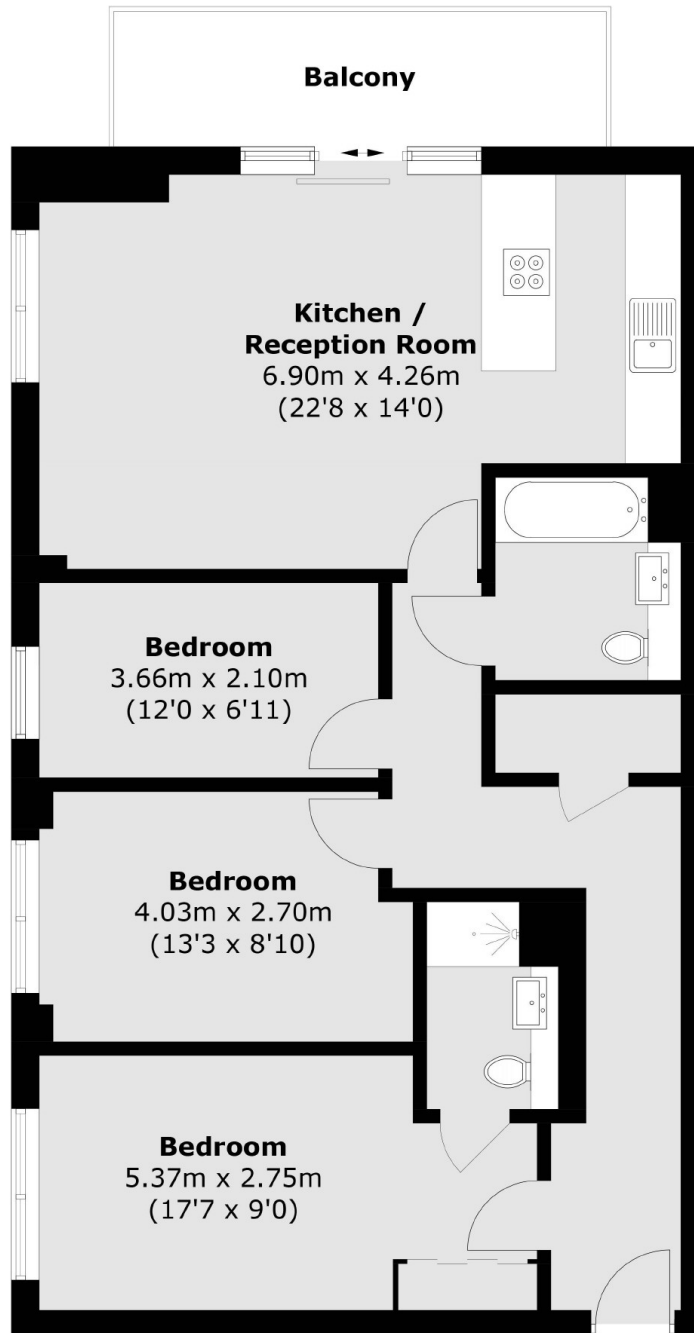
A three double bedroom apartment in the Sky Apartments. This property has three large double bedrooms, two bathrooms, a spacious open plan reception and large private balcony over looking the canal.

Located within easy reach of Hackney Wick, Homerton and Victoria Park for all local shops, bars and restaurants.

### Features

- Three Double Bedroom
- Two Bathrooms
- Concierge
- Gym
- Parking Available
- Furnished

# Homerton Road, London, E9



Total area (approx.): 85.2 sq. m (917.1 sq. ft)  
Balcony: 7.7 sq. m (82.9 sq. ft)