



## Lower Clapton Road, E5 £500,000

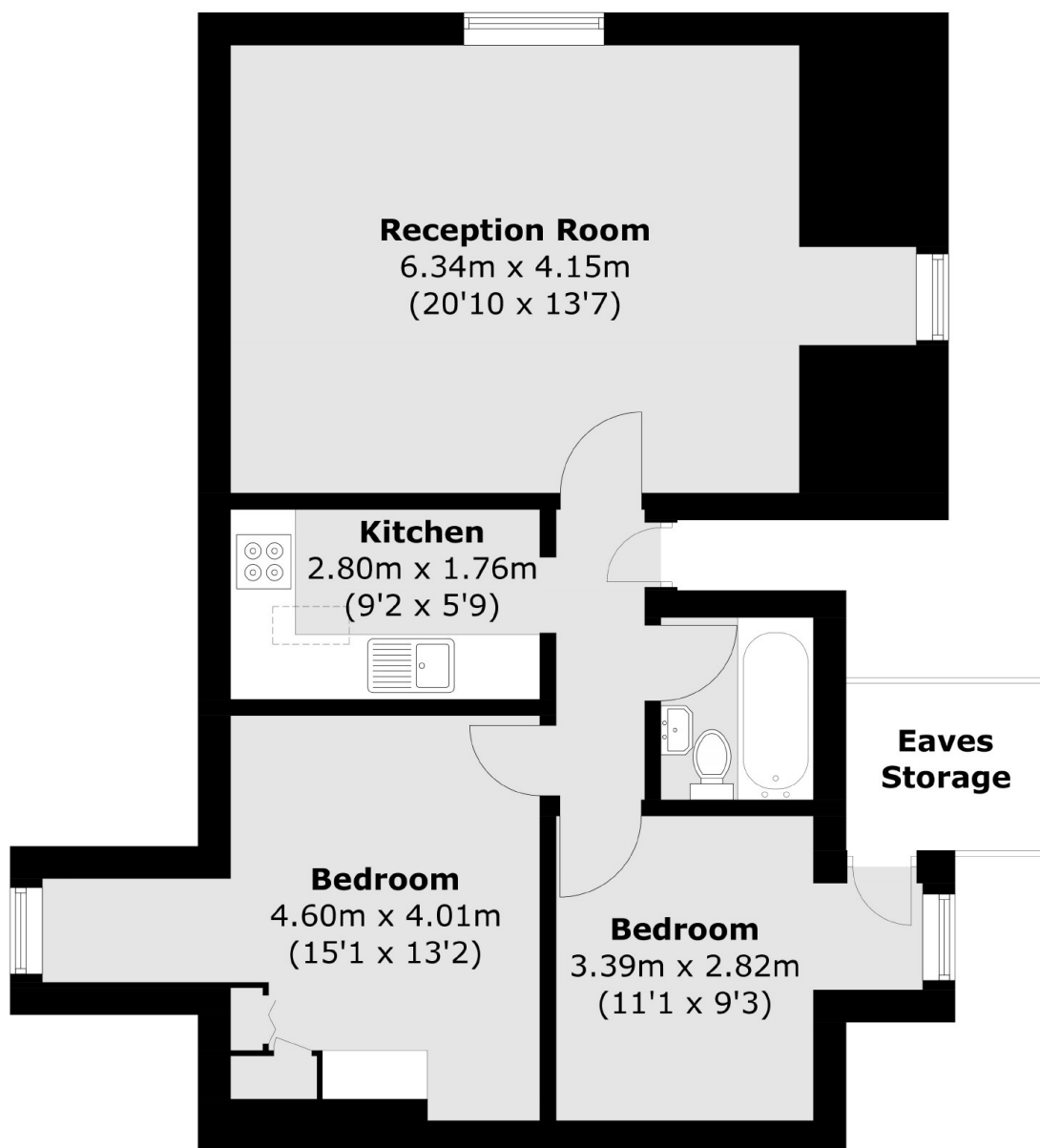
A two double bedroom apartment on the top floor of a double fronted Victorian home. This well maintained property benefits from a separate kitchen, eaves & loft storage, residents off street parking, family bathroom and large communal garden. It is being sold with a Share of Freehold and no onward chain.

The apartment overlooks Clapton Pond off Lower Clapton Road and has the many cafes, shops and restaurants of Upper & Lower Clapton Road on its doorstep. The many green spaces of Hackney Downs Park, Millfields Park and the Hackney Marshes are all within walking distance as well as Clapton Overground Station offering easy and direct access into Liverpool Street.

### Features

- Offers Over
- Two Double Bedrooms
- Period Conversion
- Share of Freehold
- Communal Garden
- Loft Space
- Chain Free
- Residents Parking

# Lower Clapton Road, London, E5



Total area (approx.): 55.2 sq. m (594.2 sq. ft)  
(Excluding Eaves Storage)