



## Woodmill Road, E5

### £475,000

A two double bedroom apartment measuring over 700sq ft in a modern secure development next to Millfields Park and the River Lea. The property benefits from an open plan kitchen, secure entry, lift access and a communal roof terrace with far reaching views. It is being sold chain free.

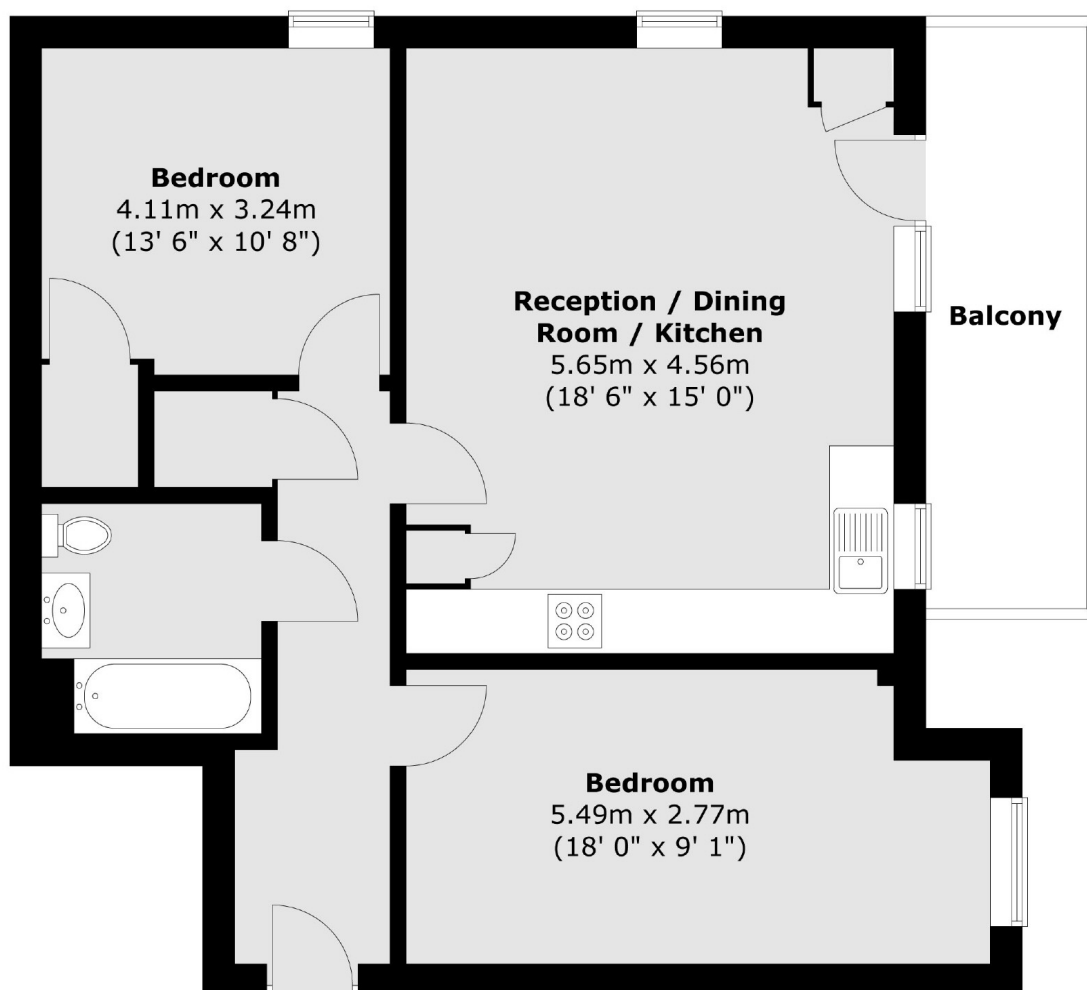
Bellevalia Court is located down a quiet road on the edge of North Millfields and the River Lea. The apartment is just over half a mile to Clapton Overground Station and Chatsworth Road with its Sunday market and many shops and cafes.

### Features

- Offers Over
- Two Double Bedrooms
- Over 700sq ft
- Lift Access
- Private Balcony
- Chain Free
- Communal Roof Terrace
- EWS1 Compliant

# Woodmill Road, Clapton, E5

## Third Floor



Total area (approx.) : 66.1 sq. m (711 sq. ft)  
Total balcony area (approx.) : 6.3 sq. m (68 sq. ft)