



Geldeston Road, E5

£400,000

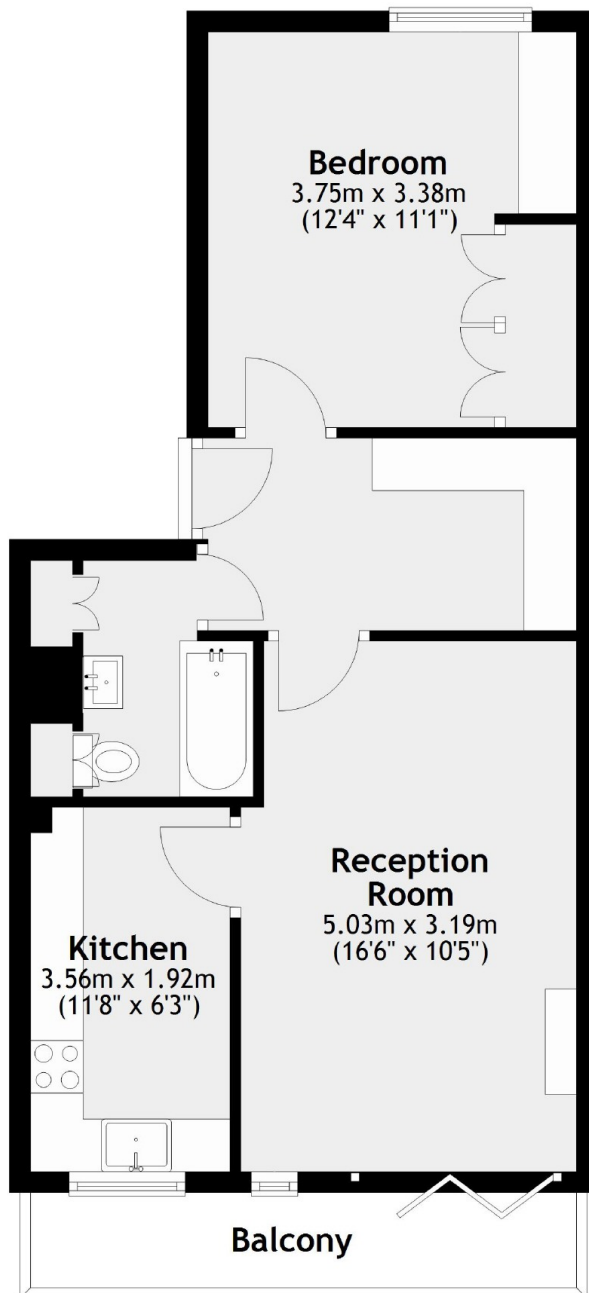
A one double bedroom apartment that has been meticulously renovated throughout by the current owner. Sitting on the top floor of a low rise block, the property benefits from a west facing balcony with glass bi-fold doors, marble flooring and bespoke kitchen, desk and storage. Gated parking is available upon request for residents.

Inglethorpe House is located on a quiet residential road less than half a mile to Clapton Overground Station, only three stops to Liverpool Street. Stoke Newington and Rectory Road Overground Stations are also just over half a mile away. The shops, cafés and restaurants on Stoke Newington Church Street and Upper Clapton Road are nearby and the green spaces of Springfield Park, Millfields and the Hackney Marshes are all within walking distance.

Features

- Offers Over
- One Double Bedroom
- Marble Finishes
- Bespoke Cabinetry
- Chain Free
- Top Floor
- West Facing Balcony

Geldeston Road, London, E5



Total area: approx. 47.6 sq. metres (512.4 sq. feet)
Excluding Balcony