



## Hackney Grove, E8

£600,000

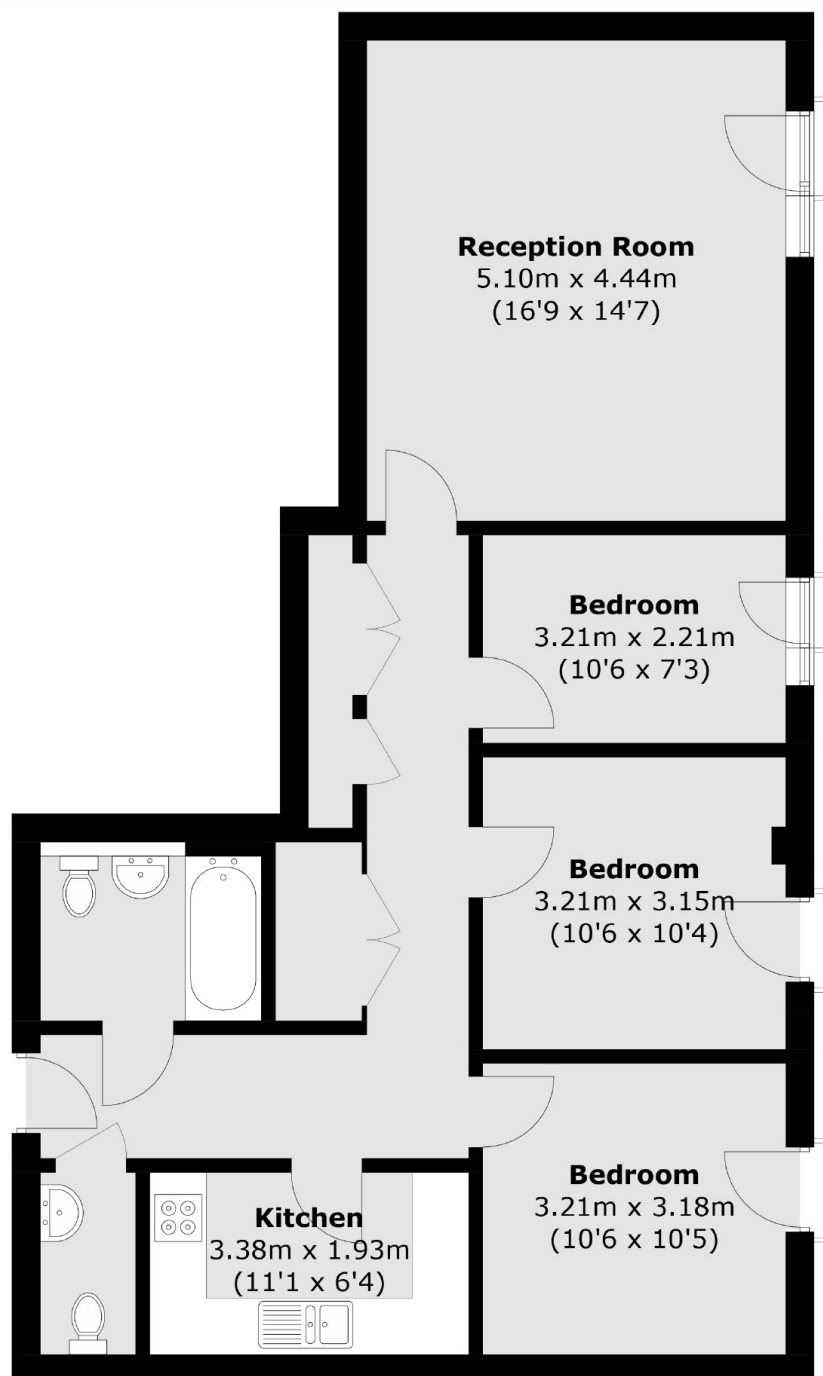
A three bedroom apartment within a modern development down the road from London Fields. Measuring over 895 sq ft there is a separate kitchen, family bathroom with additional W/C, wooden floors, built in storage and four Juliet balconies. It is being sold chain free.

Gallery House is located on Hackney Grove which is pedestrian/cycle access only. The property is 500 ft from London Fields and its Lido and Tennis Courts. The many shops, cafes, restaurants and markets of Hackney Central and Broadway Market and are within walking distance. London Fields, Hackney Central and Hackney Downs Overground Stations are all half a mile away.

### Features

- Offers Over
- Three Bedrooms
- Lift Access
- Wooden Floors
- Juliet Balconies
- Secure Bike Storage
- Communal Courtyard
- Chain Free
- London Fields

# Hackney Grove, London, E8



Total area (approx.): 83.2 sq. m (895.6 sq. ft)