



Cricketfield Road, E5

£550,000

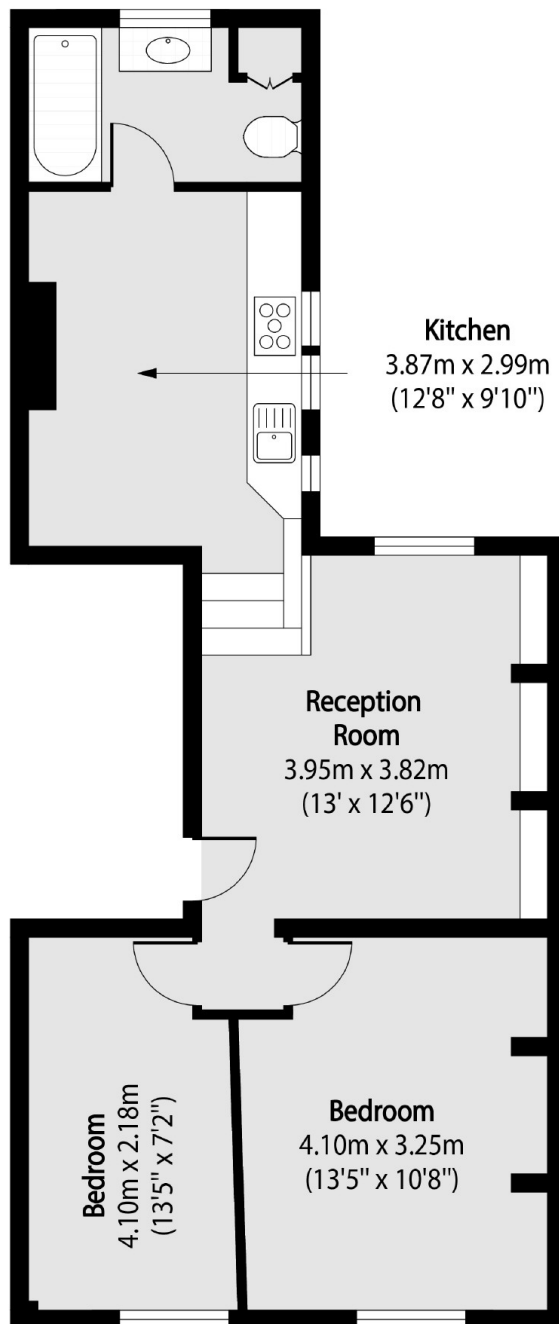
A two double bedroom period conversion moments from Hackney Downs Park. Located on the first floor, this split level apartment has a bespoke kitchen, sash windows, high ceilings, wooden floor and modern bathroom. It is being sold chain free and with a Share of the Freehold.

The property is ideally located only 500ft to Hackney Downs Park offering plenty of space for outdoor recreation including tennis. The many shops, cafes and restaurants of Mare Street and Lower Clapton Road are within walking distance. There are many transport links nearby offering easy access into Central and West London being half a mile from Clapton, Hackney Downs & Hackney Central Overground Stations.

Features

- Two Double Bedrooms
- Period Conversion
- High Ceilings
- Sash Windows
- Share of Freehold
- Hackney Downs Park
- Chain Free

Cricketfield Road, London, E5



Total area (approx): 56.53 sq m (608 sq. ft)