



Ickburgh Road, E5

£450,000

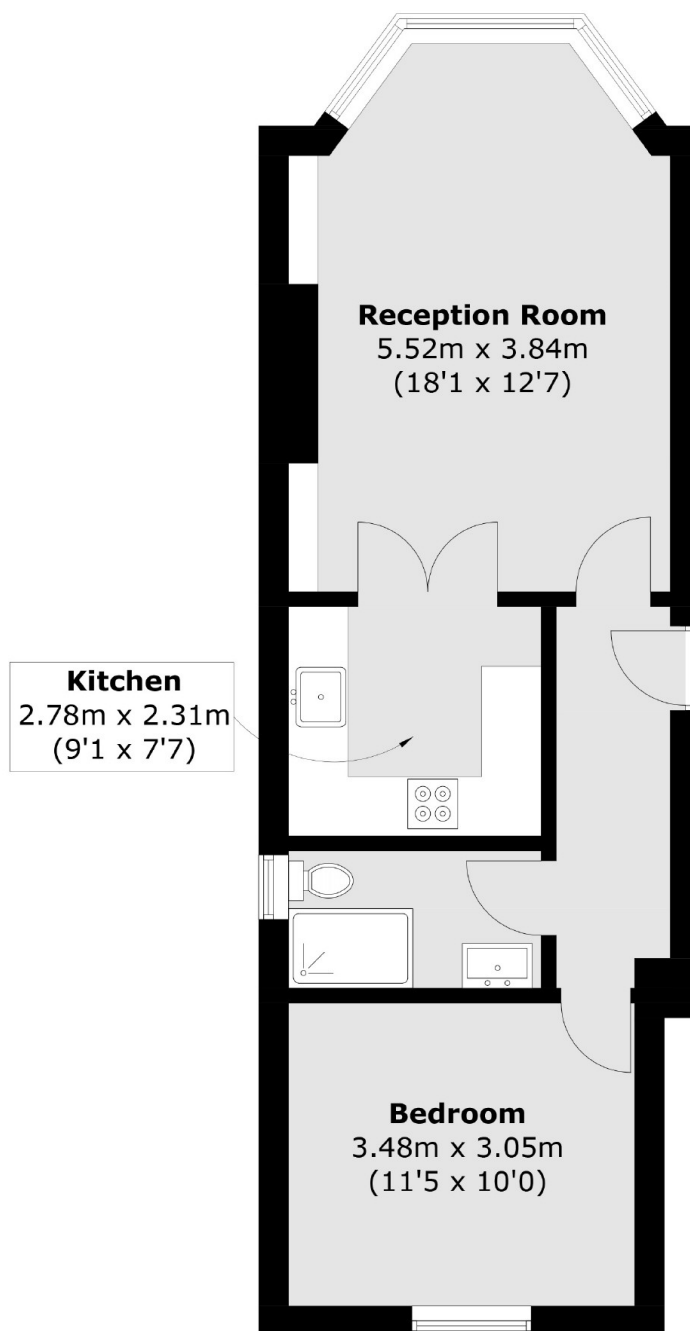
A one double bedroom apartment within a Victorian end of terrace on a quiet, tree-lined street. The characterful property has been modernised yet retains many of its original period features; wooden floors, sash windows and high ceilings. The bathroom has marble tiles, chrome fixtures and walk in shower.

Ickburgh Road is a no through road only 500 ft to Clapton Overground Station giving you direct access into Liverpool Street for easy connections anywhere in London. Alternatively, Rectory Road Overground Station is just under half a mile away. Many shops, cafés and pubs are within walking distance including the well known gastro pub, The Crooked Billet. Millfields Park, the River Lea and Walthamstow Marshes are nearby providing many opportunities for outdoor recreation.

Features

- One Double Bedroom
- Victorian Conversion
- Sash Windows
- Wooden Floors
- End of Terrace
- High Ceilings
- Great Transport Links
- Hackney Marshes

Ickburgh Road, London, E5



Total area (approx.): 46.2 sq. m (497.3 sq. ft)