



Dalston Lane, E8

£290,000

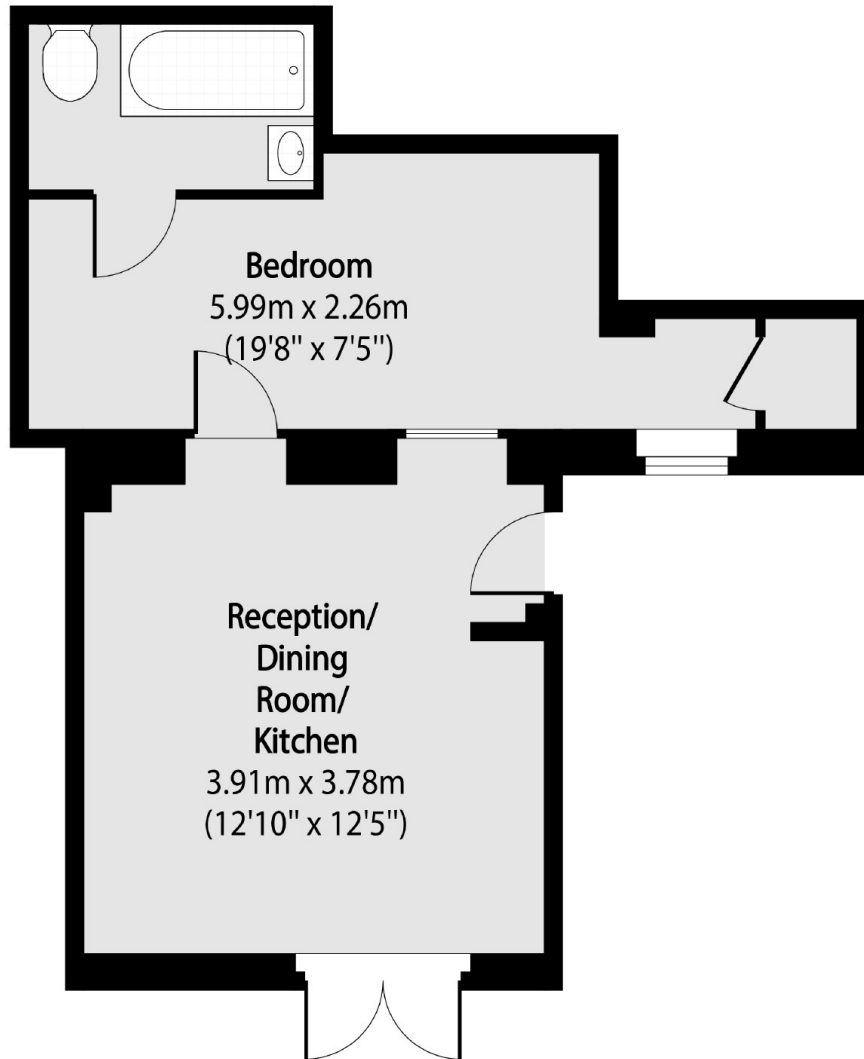
A one double bedroom Georgian conversion in the heart of Hackney. The property has direct access to a large shared garden and has been recently renovated with an open plan kitchen/living area and modern bathroom. It is being sold chain free.

Located only yards from Hackney Downs station and less than half a mile to Hackney Central station it has great transport links into Central & West London. There is an endless supply of café's, restaurants, bars and shops with Mare Street, Broadway Market and London Fields all close by.

Features

- Offers Over
- One Double Bedroom
- Georgian
- Large Communal Garden
- Secure Entry
- Open Plan
- Wooden Flooring

Dalston Lane, London, E8



Total area (approx): 31.96 sq m (344 sq. ft)