



Lower Clapton Road, E5

£340,000

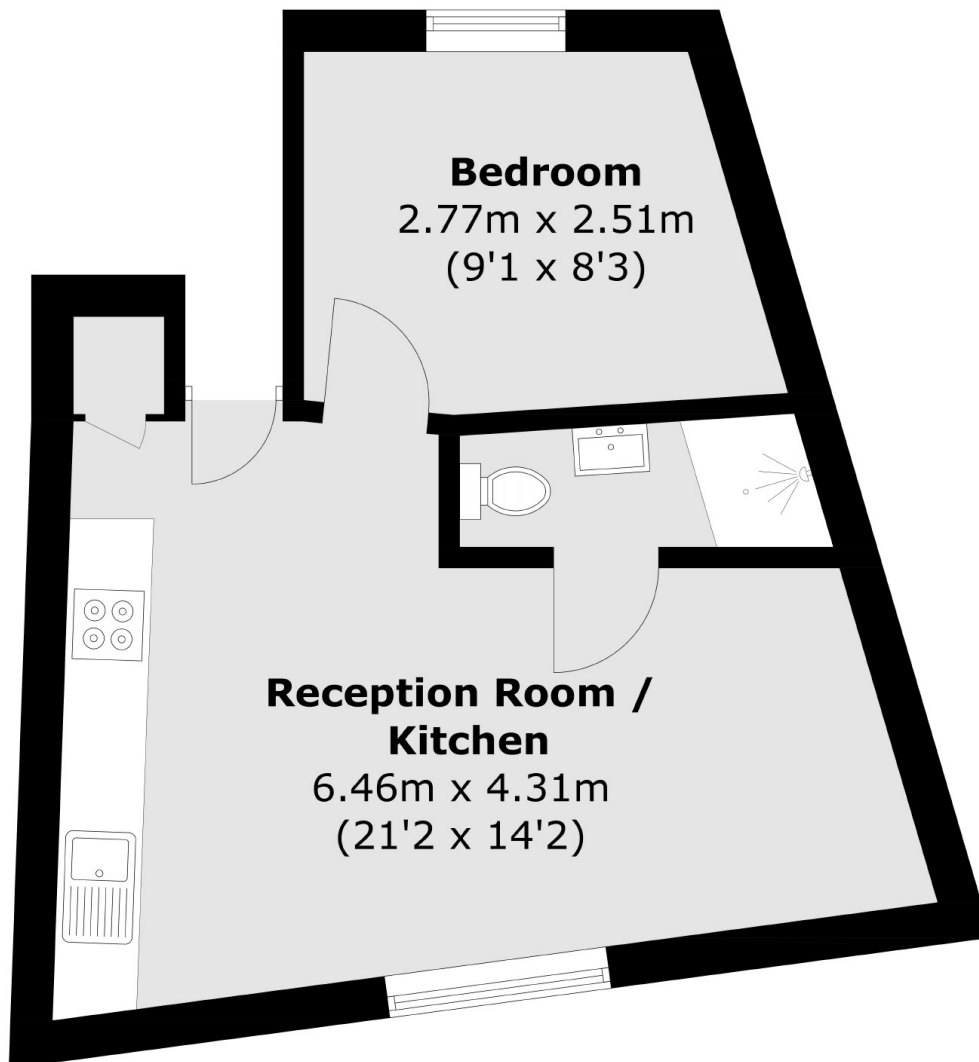
A one double bedroom period conversion around the corner from Clapton Square. The property is on the top floor, has an open plan kitchen living area, modern bathroom and benefits from double aspect and a long lease. It is being sold chain free.

The green spaces of Clapton Square, Hackney Downs Park and Millfields Park are all within walking distance. Hackney Central & Hackney Downs Overground Stations are under half a mile away offering easy access to the rest of the City. Chatsworth Road and Mare Street's many cafes, restaurants, shops and market are nearby.

Features

- One Double Bedroom
- Period Conversion
- Open Plan
- Long Lease
- Top Floor
- Clapton Square
- Chain Free

Lower Clapton Road, London, E5



Total area (approx.): 31.4 sq. m (338.0 sq. ft)