



Bodney Road, E8

£400,000

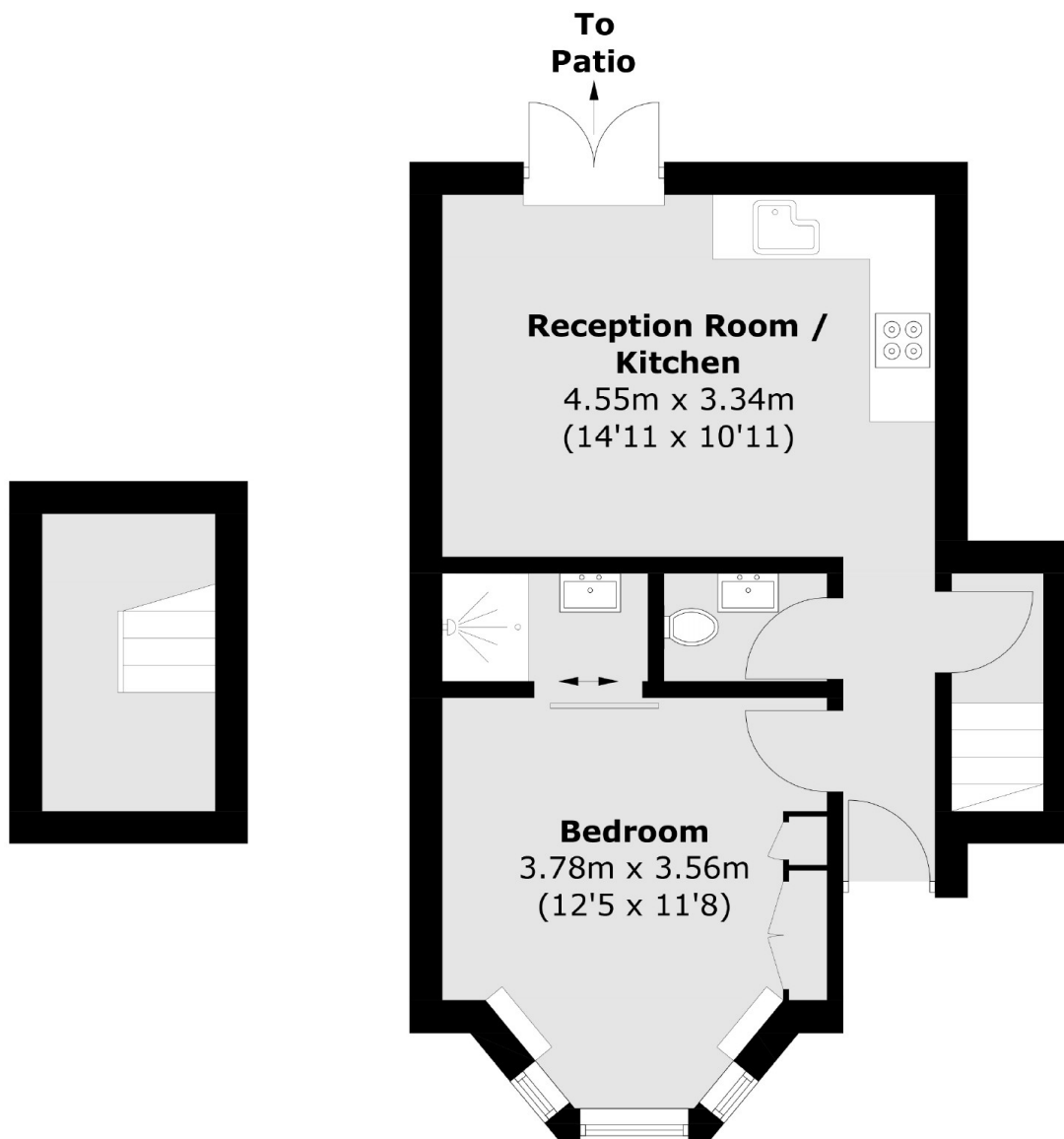
A one double bedroom period apartment with a secluded private garden. The property is in excellent condition with an open plan kitchen, wooden flooring, bespoke shutters, cornicing and a large cellar perfect for storage.

The property is situated 0.2 miles from Hackney Downs Station and 0.4 miles from Hackney Central Station, offering easy access to the city and west end. The amenities and array of shops on Mare Street are close by and Hackney Downs Park is 0.2 miles away.

Features

Offers In Excess Of
One Double Bedroom
Bay Window
West Facing Private Garden
Private Cellar
Original Features
Wooden Flooring

Bodney Road, London, E8



Cellar

Ground Floor

Total area (approx.): 41.5 sq. m (446.6 sq. ft)
(Including Cellar)

Dexters

Hackney Central
331 Mare Street
Hackney
London
Sales
020 7067 2420

Energy Rating: D. We aim to make our particulars both accurate and reliable. However they are not guaranteed; nor do they form part of an offer or contract. If you require clarification on any points then please contact us, especially if you're traveling some distance to view. Please note that appliances and heating systems have not been tested and therefore no warranties can be given as to their good working order.

 **RICS** Regulated
Estate Agent
and Letting Agent

dexters.co.uk