

Bodney Road, E8

£435,000

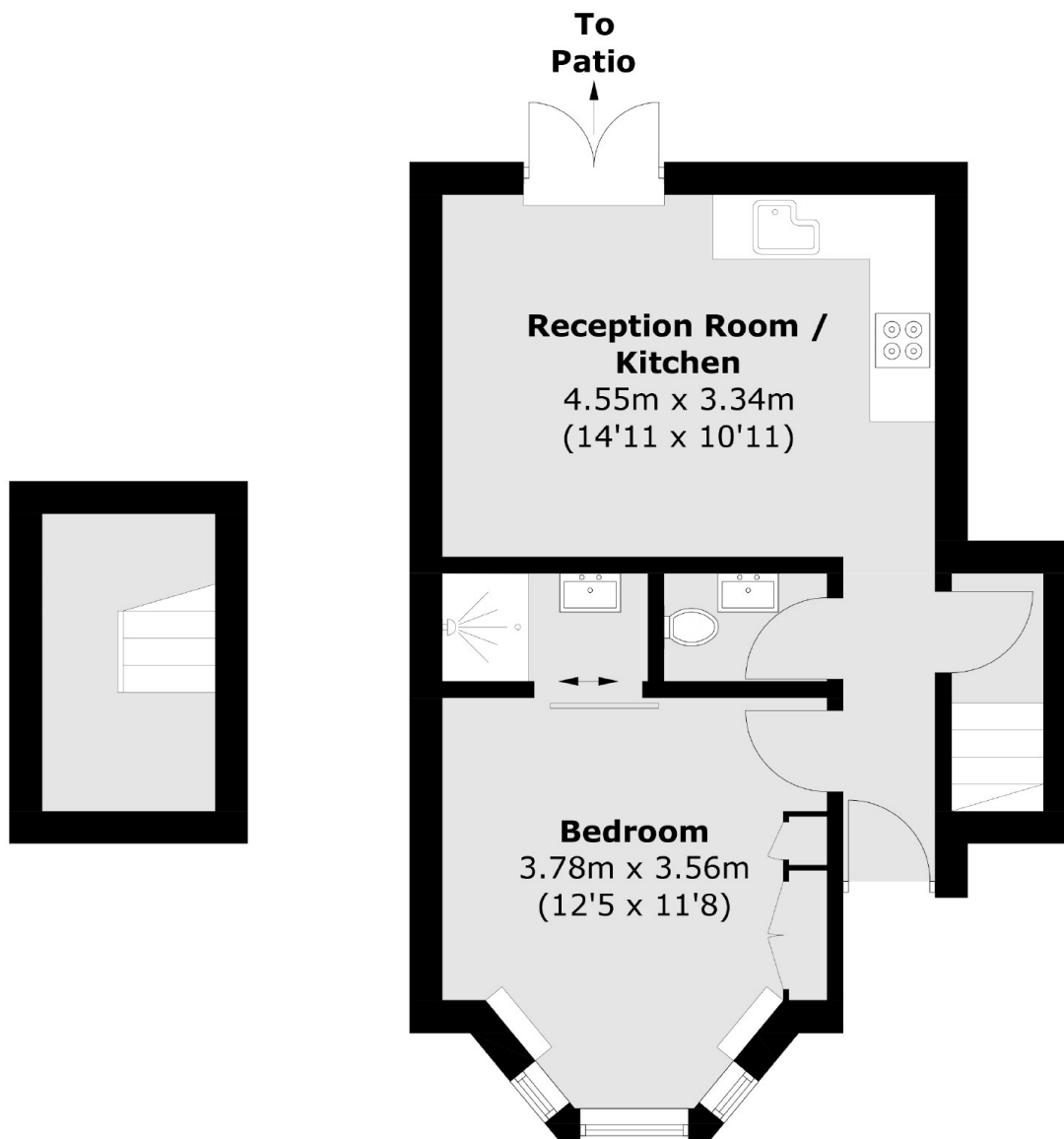
A one double bedroom period apartment with a secluded private garden. The property is in excellent condition with an open plan kitchen, wooden flooring, bespoke shutters, cornicing and a large cellar perfect for storage.

Next to Hackney Downs Park with Hackney Downs & Hackney Central under a quarter of a mile away offering easy access into the City and West End. Many shops, restaurant and bars are close by on Mare Street including the popular Broadway Market next to London Fields.

Features

- One Double Bedroom
- Bay Window
- West Facing Garden
- Private Cellar
- Original Features
- Wooden Flooring

Bodney Road, London, E8



Cellar

Ground Floor

Total area (approx.): 41.5 sq. m (446.6 sq. ft)
(Including Cellar)

Dexters

Hackney Central
331 Mare Street
Hackney
London
Sales
020 7067 2420

Energy Rating: - We aim to make our particulars both accurate and reliable. However they are not guaranteed; nor do they form part of an offer or contract. If you require clarification on any points then please contact us, especially if you're traveling some distance to view. Please note that appliances and heating systems have not been tested and therefore no warranties can be given as to their good working order.

 **RICS** Regulated
Estate Agent
and Letting Agent

dexters.co.uk