



Filey Avenue, N16

£800,000

Dexters



Filey Avenue, N16

A three bedroom, three bathroom split level period conversion with a south-east facing private garden on a quiet, leafy residential street. The property measures over 1,060 sq ft and is in excellent condition with sash windows, wooden flooring and ample storage. It is being sold with a Share of the Freehold.

As you enter the apartment the entrance hall leads to two spacious double bedrooms with built in wardrobes, one with en-suite. There is a second modern family bathroom on this level.

Downstairs is an open plan kitchen living area with room to dine and two french glass doors leading out onto the large south-east facing garden. The third bedroom sits to the front of the property and has its own en-suite and built in wardrobes.

The property is offered chain free and sold with a Share of the Freehold.

Filey Avenue is conveniently located half a mile to both Stoke Newington and Clapton Overground Stations. It is under a quarter of a mile from the green spaces of Springfield Park and Walthamstow Wetlands. The many shops, restaurants and market on Stoke Newington Church Street are also within walking distance less than a mile away.

Features

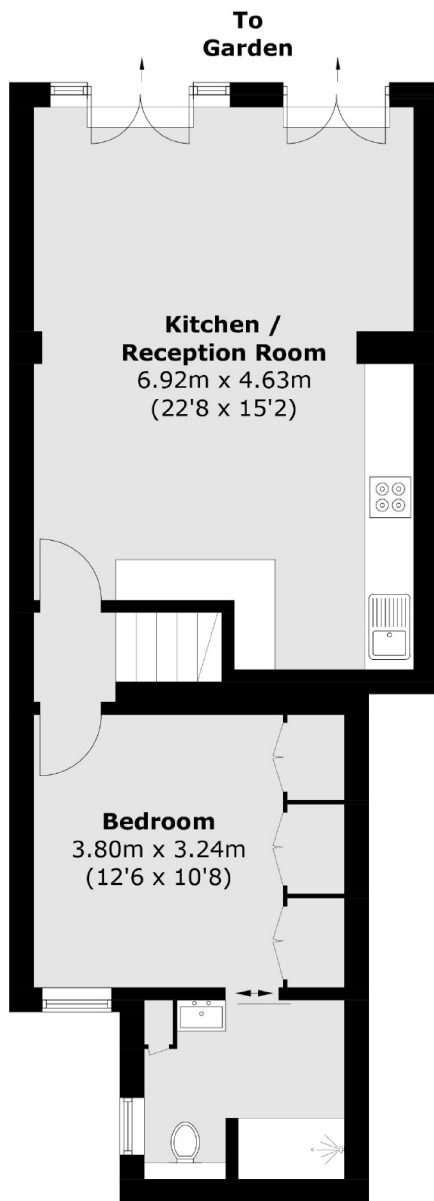
- Offers Over
- Three Double Bedrooms
- Three Bathrooms
- Split Level
- Period Conversion
- Share of Freehold



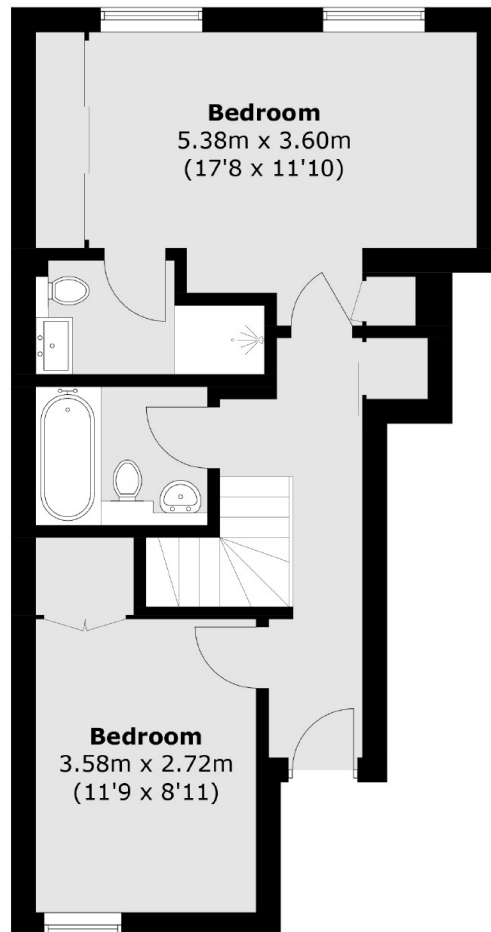




Filey Avenue, London, N16



Lower Ground Floor



Raised Ground Floor

Total area (approx.): 99.1 sq. m (1,066.7 sq. ft)