



Amhurst Road, E8

£475,000

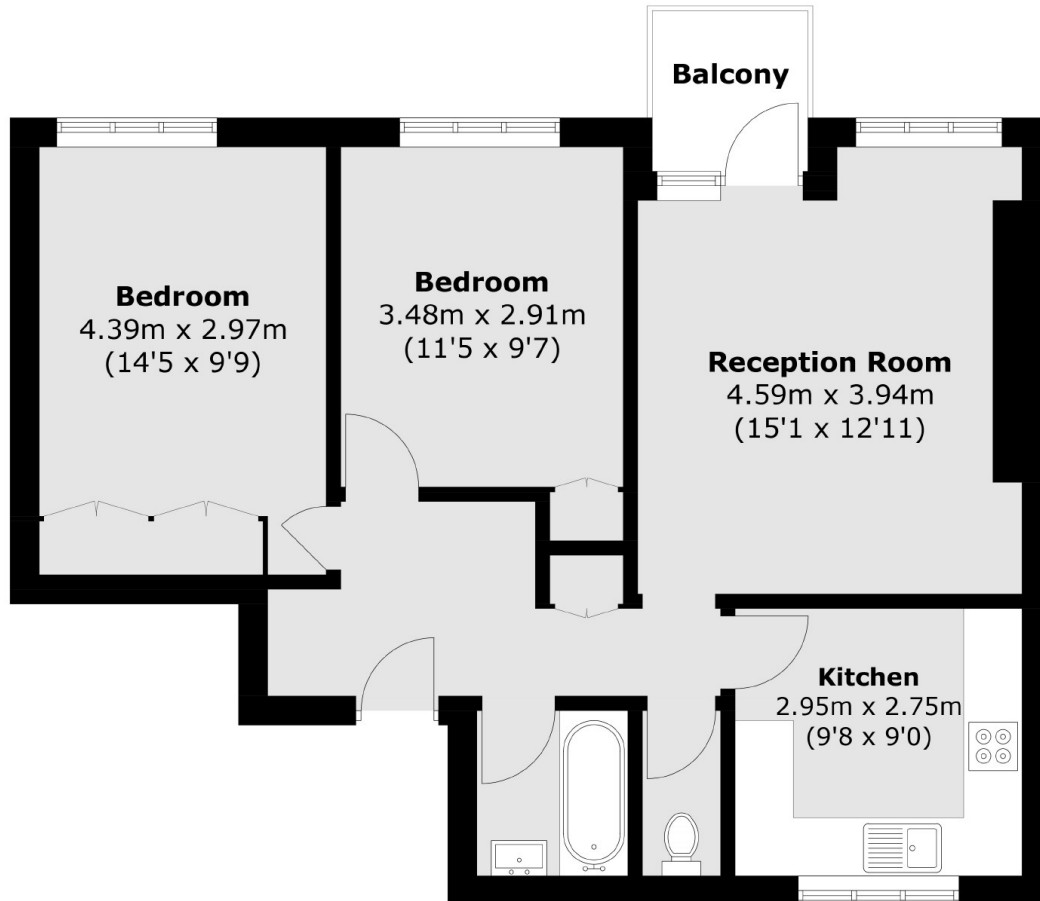
A two double bedroom purpose built flat in the heart of Hackney with private balcony and city views. The property, measuring over 680 sq ft, has been recently renovated and has a separate kitchen & W/C, plenty of storage and a south facing aspect.

Located just off of Mare Street and Dalston Lane with endless restaurants and bars to choose from. Great transport links nearby including Hackney Downs and Hackney Central both within a 5 minute walk away, for easy access to Central London and Stratford.

Features

Offers In Excess Of
Two Double Bedrooms
South Facing Balcony
City Views
London Fields
Over 680 sq ft
Lift Access

Amhurst Road, London, E8



Total area (approx.): 63.5 sq. m (683.5 sq. ft)
Balcony: 2.6 sq. m (28.0 sq. ft)