



Graham Road, E8

£550,000

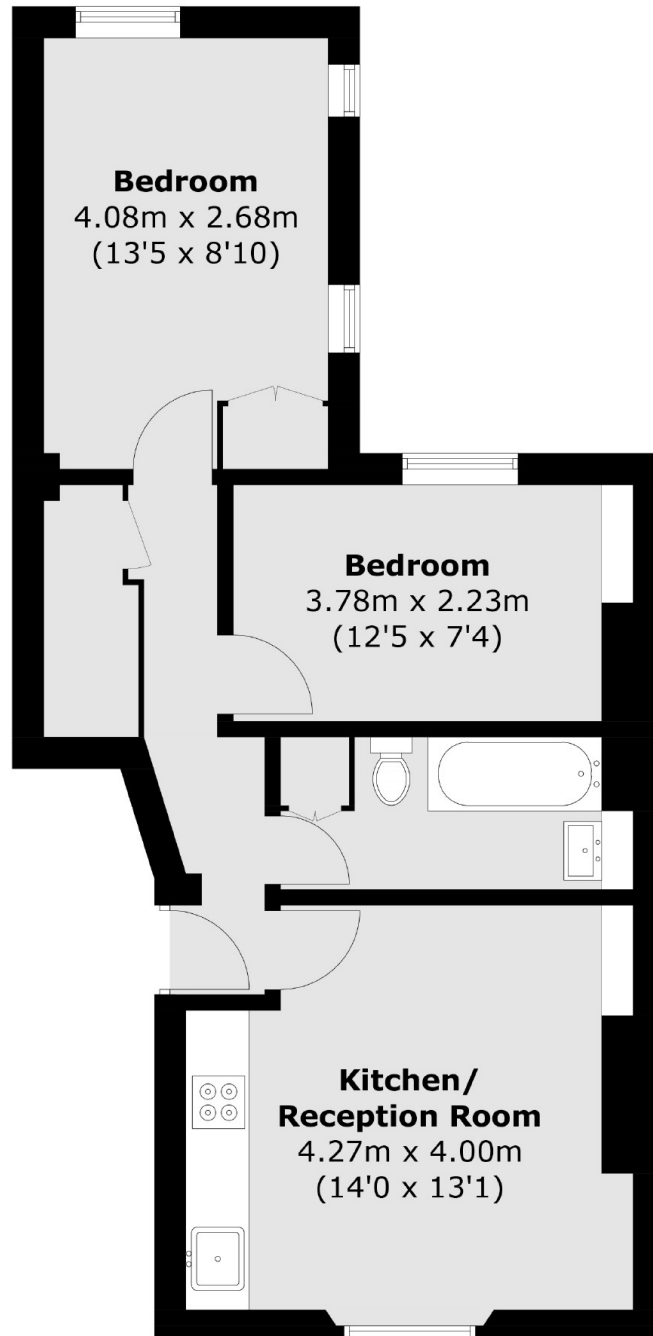
A two double bedroom period conversion in the heart of Hackney. The property has been recently renovated throughout to a very high standard whilst retaining many of its period features. It has an open plan kitchen living area, parquet wood flooring, underfloor heating, high ceilings, double glazed sash windows and bespoke storage. It has a long lease and is being sold chain free.

Graham Road runs between Dalston and Mare Street with many shops, cafes and amenities to choose from including Broadway Market and Kingsland High Street. It is half a mile from London Fields and its tennis courts and Lido. Hackney Central, Hackney Downs, Dalston Kingsland and Dalston Junction Overground Stations are all half a mile away.

Features

Offers in excess of
Two Double Bedrooms
Period Conversion
Recently Renovated
Underfloor Heating
Chain Free
Long Lease
Sash Windows

Graham Road, London, E8



Total area (approx.): 48.7 sq. m (524.2 sq. ft)