



Graham Road, E8

£375,000

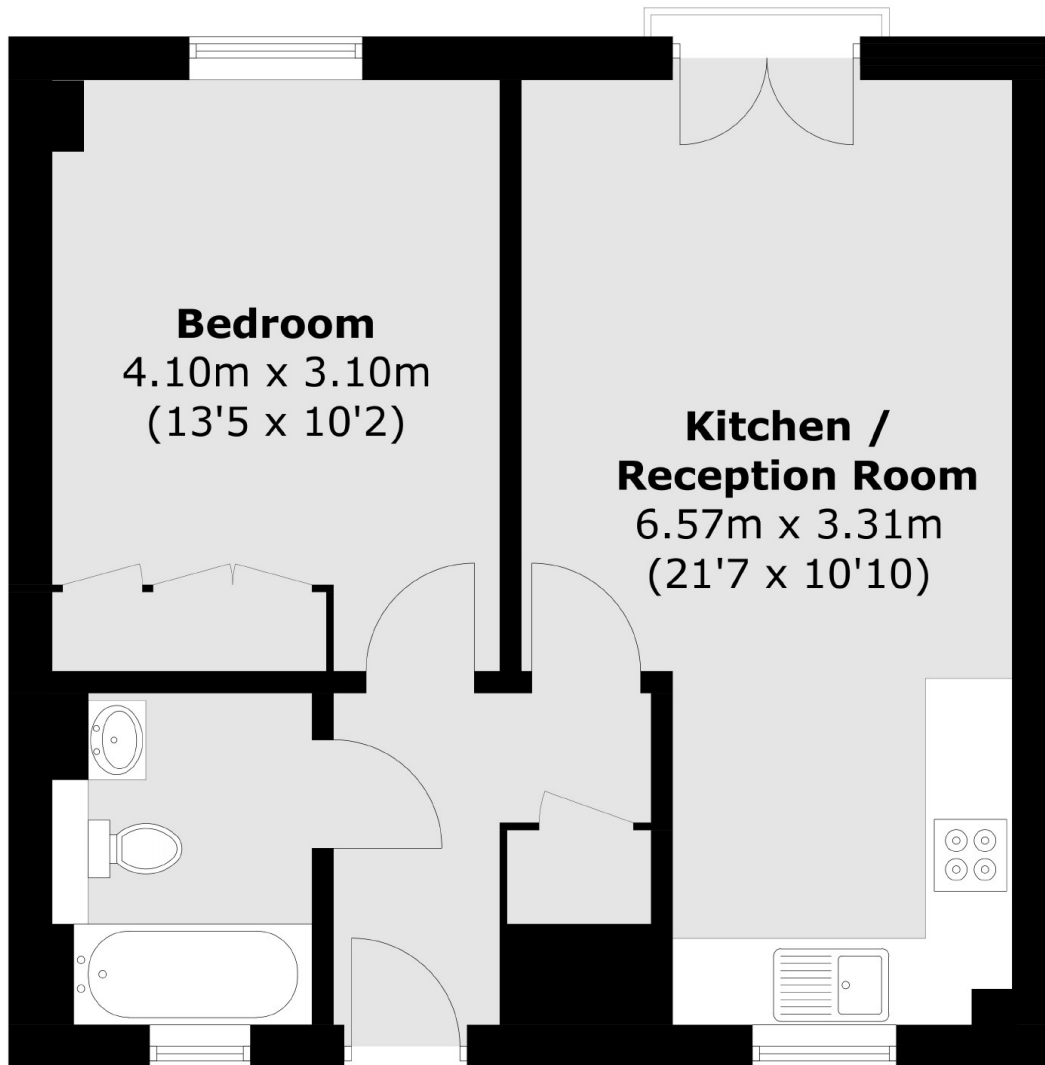
A one double bedroom modern apartment measuring over 470 sq ft with a Juliet balcony. The property benefits from an open plan kitchen living room with south facing aspect, modern bathroom and plenty of storage. It is being sold chain free.

The property is located in a prime Hackney Central location with Hackney Central Station on your doorstep. The open green spaces of Hackney Downs and London Fields are close by. Hackney Central provides a variety of independent coffee shops, Michelin starred restaurants, bakeries and breweries. Broadway Market is a short walk away.

Features

Offers in excess of
One Double Bedroom
Open Plan
Chain Free
Juliet Balcony
Prime Location
Hackney Central
EWS1 approved

Graham Road, London, E8



Total area (approx.): 43.9 sq. m (472.5 sq. ft)

Dexters

Hackney Central
331 Mare Street
Hackney
London
Sales
020 7067 2420

Energy Rating: B. We aim to make our particulars both accurate and reliable. However they are not guaranteed; nor do they form part of an offer or contract. If you require clarification on any points then please contact us, especially if you're traveling some distance to view. Please note that appliances and heating systems have not been tested and therefore no warranties can be given as to their good working order.

 **RICS** | Regulated
Estate Agent
and Letting Agent

[dexters.co.uk](https://www.dexters.co.uk)