



Durlston Road, E5

£625,000

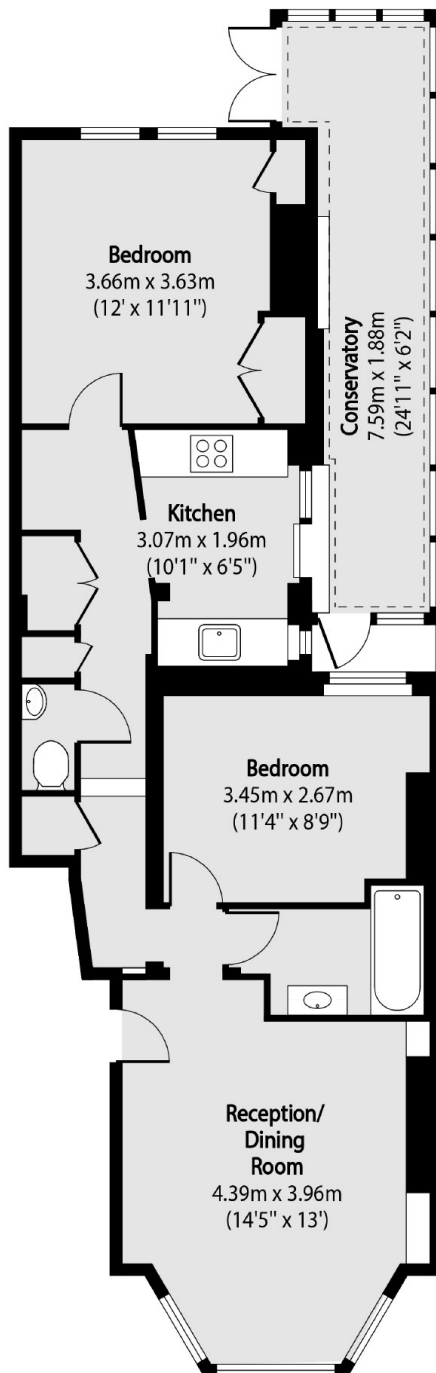
A two bedroom garden apartment situated on Durlston Road, in the sought-after E5 neighbourhood. The property measures just under 800 sq ft with two double bedrooms, period features, conservatory and a large private garden. It is being sold with a long lease.

Prime location within Clapton offering an array of cafés, restaurants and boutique shops nearby on Stoke Newington Church Street & Upper Clapton Road. Excellent transport links are available offering easy access across the City and Central London with Clapton and Rectory Road Overground Stations half a mile away. The green spaces of Stoke Newington Common, Walthamstow Marshes and Abney Park are all within walking distance.

Features

- Two Double Bedrooms
- Victorian Conversion
- Private Garden
- Long Lease
- Conservatory
- Stoke Newington Church Street
- High Ceilings

Durlston Road, London, E5



Total area (approx): 74.14 sq m (798 sq. ft)