



Shacklewell Lane, E8

£1,625,000

Dexters



Shacklewell Lane, E8

A grand Victorian terraced house measuring over 2000 sq ft with a West facing garden and self-contained studio. Available for the first time in over 20 years this property has been thoughtfully upgraded yet retained many of its original period features. It is being sold chain free.

The ground floor comprises a double reception room with bay window, original marble fireplaces and ornate original coving. There is a study/smaller bedroom on the landing with a door leading down into the garden.

Downstairs there is a large family kitchen, dining room, utility area and bathroom. The french doors lead into the mature landscaped west facing garden.

The wider than average hallway has a beautiful curved staircase leading to the upper floors. There are two double bedrooms on the first floor and family bathroom with soaking tub.

The owners have done a loft extension with skylights and is being used as the principal bedroom with en-suite and eaves storage.

Ideally located within walking distance to the authentic Ridley Road and Broadway Markets, roof top bars, brasseries and independent shops & cinema. Dalston Kingsland, Hackney Downs and Dalston Junction Stations are close by for easy access to Liverpool Street and Central London. Many bus routes are also available on Kingsland Road.

Features

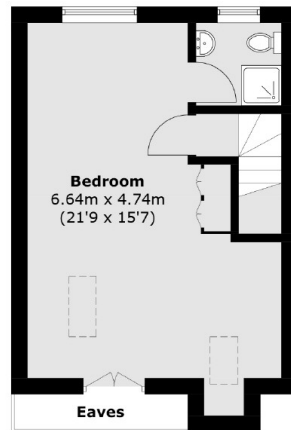
- Victorian Terrace
- Four Bedrooms
- Three Bathrooms
- Garden Studio
- West Facing Garden
- Chain Free



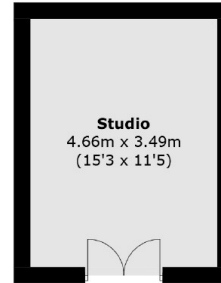




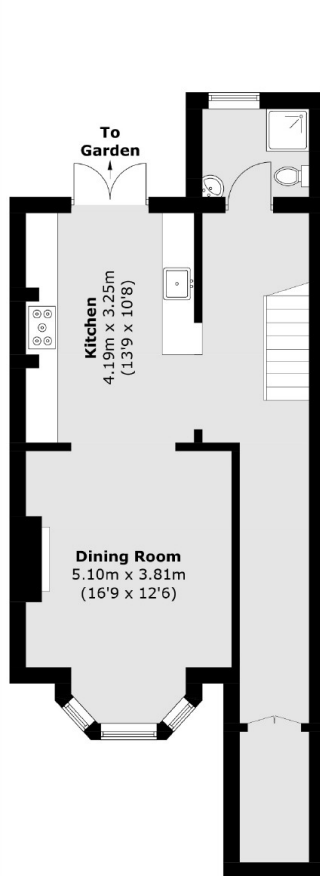
Shacklewell Lane, London, E8



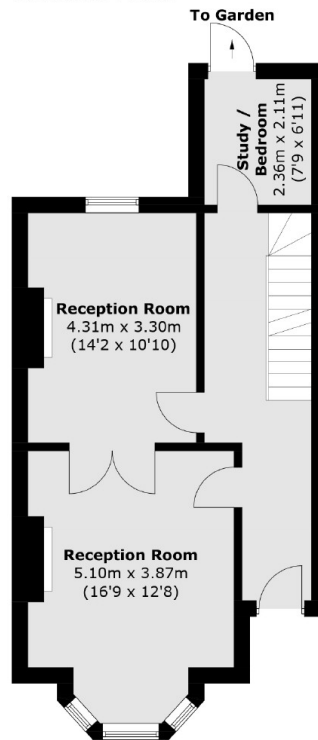
Second Floor



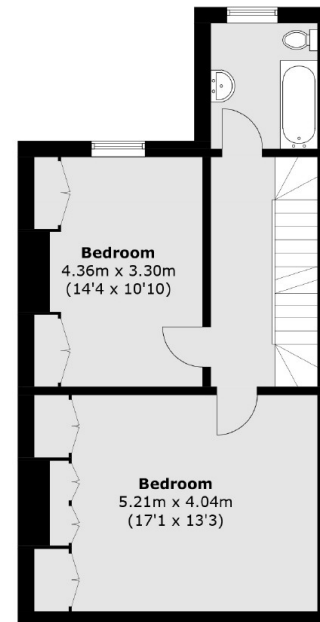
(Not Shown In Actual
Location / Orientation)
Outbuilding



Lower Ground Floor



Ground Floor



First Floor

Total area (approx.): 188.7 sq. m (2,031.2 sq. ft)
Outbuilding area (approx.): 16.5 sq. m (177.6 sq. ft)
(Excluding Eaves)