



Spurstowe Terrace, E8

£700,000

A four bedroom split level apartment with over 1500 sq ft of living space moments away from Hackney Central. The property benefits from lift access, bike storage, separate kitchen, en-suite bathrooms and a private roof terrace. It is being sold chain free.

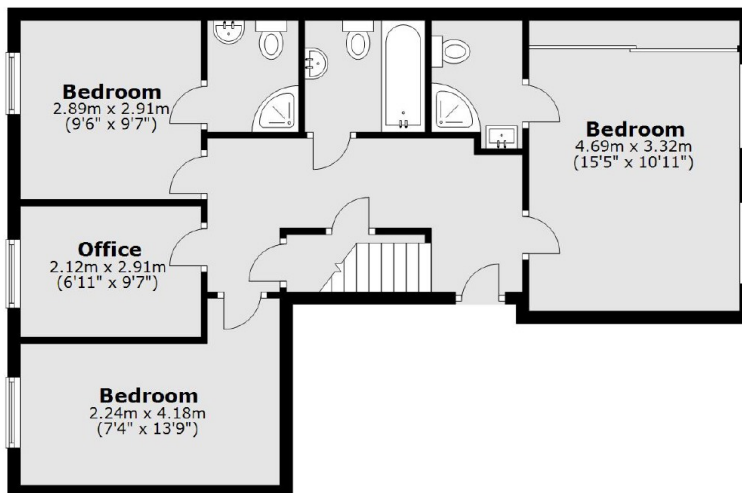
Just around the corner from both Hackney Central and Hackney Downs Overground stations for easy access to the City. Set in the heart of Hackney, this property is just steps from the many shops, bars, restaurants, cafés of Hackney Central and Broadway Market. The green spaces of London Fields and Hackney Downs Park are under half a mile away.

Features

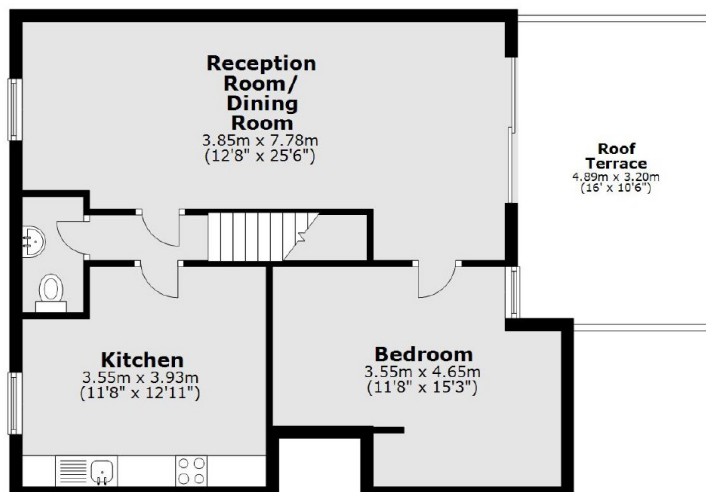
Offers In Excess Of
Four Double Bedrooms
Three Bathrooms
Office/Wardrobe
South Facing Roof Terrace
Hackney Downs Station

Spurstowe Terrace, London, E8

Third Floor



Fourth Floor



Main area: Approx. 124.4 sq. metres (1339.0 sq. feet)
Plus roof terrace, approx. 15.6 sq. metres (168.4 sq. feet)