



## Amhurst Road, E8

£595,000

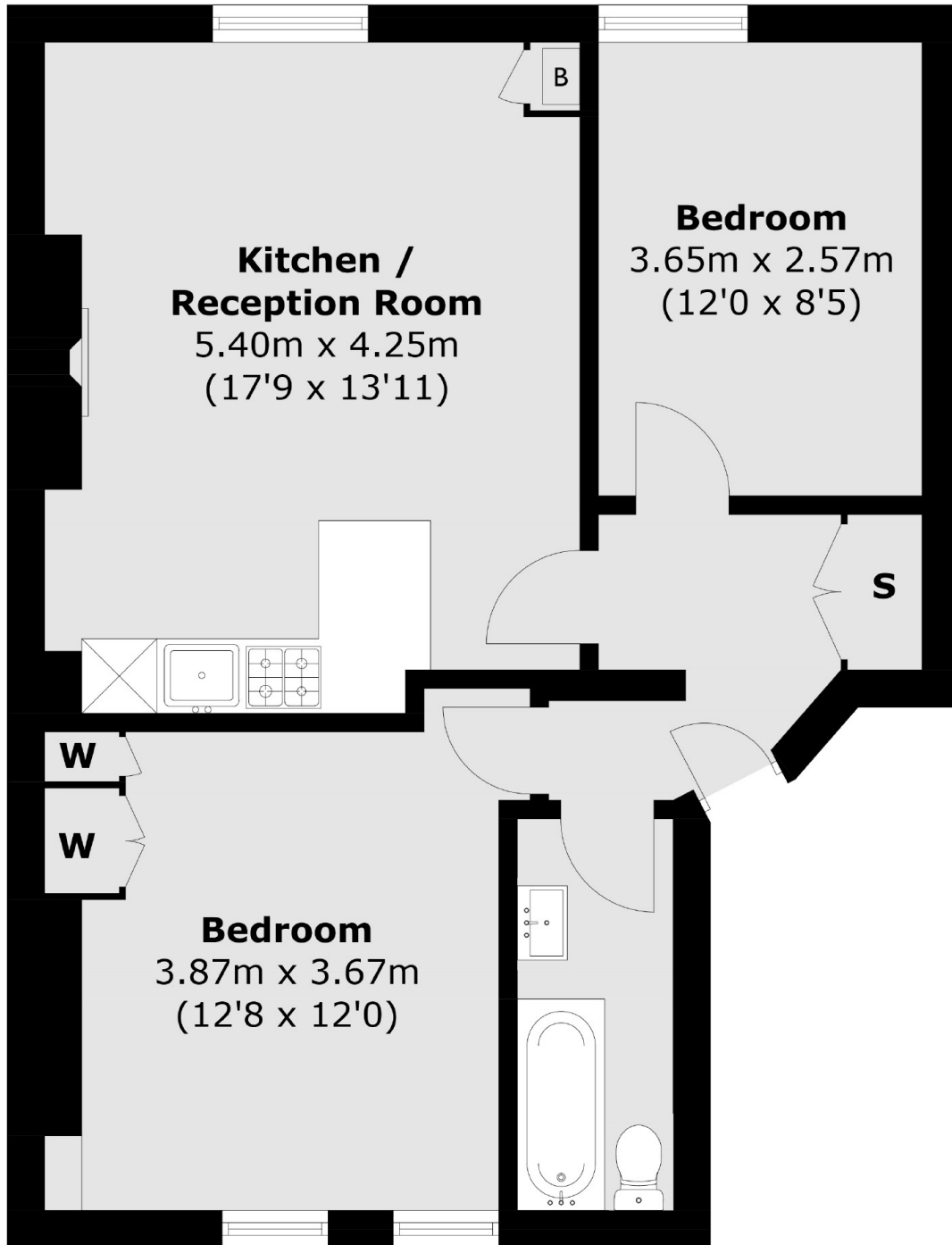
A well presented two bedroom apartment within a Victorian conversion. The property is on the second floor and benefits from sash windows, wooden flooring, modern kitchen and an open plan living area. It is being sold chain free.

Located in the heart of Hackney, the property is only half a mile to Hackney Central and Hackney Downs stations offering great transport links. There is an endless supply of café's, restaurants, bars and shops with Mare Street, Broadway Market and London Fields all within walking distance and Hackney Downs Park is also under a quarter of a mile away.

### Features

- Two Double Bedrooms
- Open Plan
- Period Conversion
- Hackney Downs Park
- Double Aspect
- Chain Free

**Amhurst Road,  
London, E8**



**Second Floor**

Total area (approx.): 58.5 sq. m (629.6 sq. ft)