

Lower Clapton Road, E5 £550,000

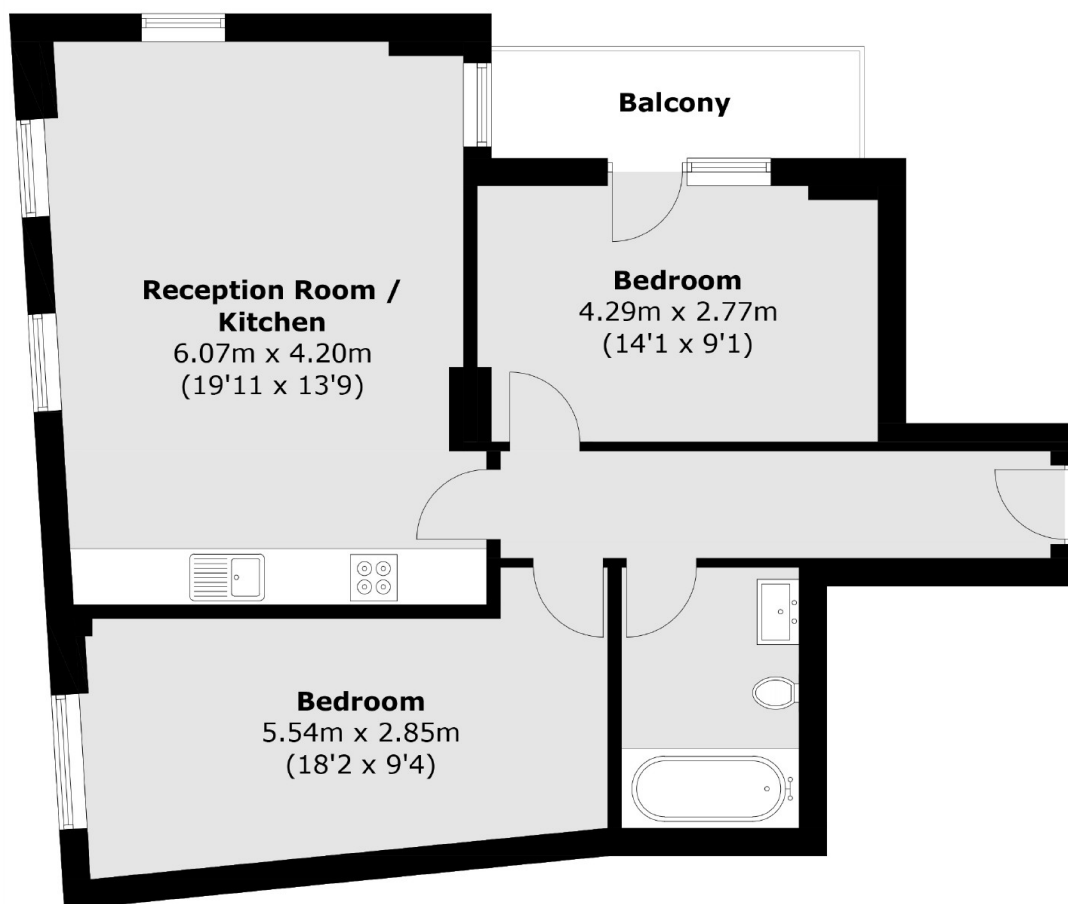
A modern two double bedroom apartment located in the boutique development Nonet House. The property has wooden floors, an open plan kitchen and living area with space to dine, modern family bathroom and a south facing private balcony.

Nonet House is centrally located on the corner of Lower Clapton Road and Goulton Road. The green spaces of Hackney Downs Park and Clapton Square are under a quarter of a mile away and many shops, cafes and restaurant's are on your doorstep including Mare Street and Chatsworth Road with its Sunday market.

Features

- Offers Over
- Two Double Bedrooms
- South Facing Balcony
- Modern
- Open Plan
- Energy Efficient
- EWS1 Compliant

Lower Clapton Road, London, E5



Total area (approx.): 68.4 sq. m (736.2 sq. ft)
Balcony area (approx.): 4.5 sq. m (48.4 sq. ft)