



## Atkins Square, E8

£625,000

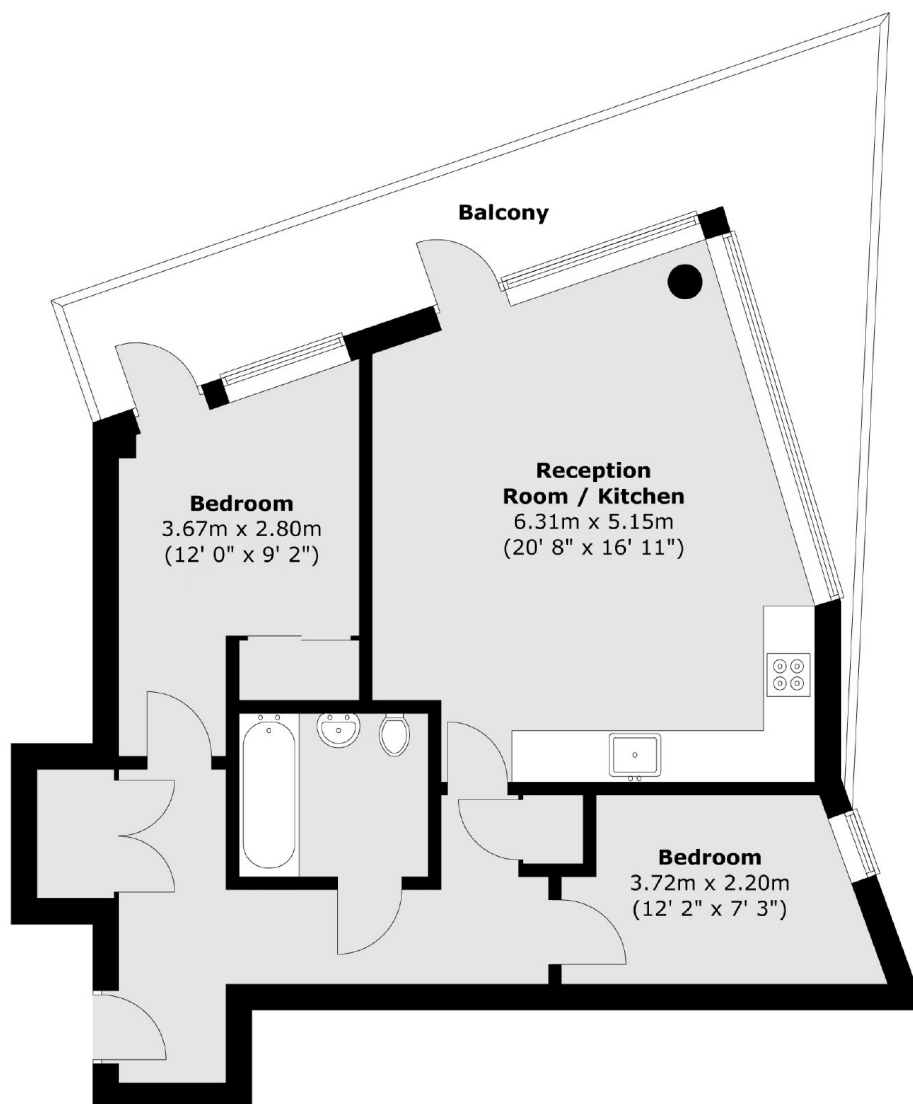
A modern two bedroom apartment located on the sixth floor of the award winning Atkins Square development. The property has an open plan reception room with floor to ceiling windows and a wrap-around balcony with panoramic views. The building has a concierge, lift and residents gym.

Centrally located on Dalston Lane there are many restaurants, shops and bars to choose from as well as Hackney Downs Park and London Fields within walking distance. Transport links include Hackney Downs just 150m away with direct trains to Liverpool Street, and Hackney Central a quarter of a mile away, for easy access to Central London and Stratford.

### Features

- Two Double Bedrooms
- Modern
- Panoramic Views
- Gym & Concierge
- South West Balcony
- Long Lease

# Atkins Square, London, E8



Total area (approx.) : 63.8 sq. m (687 sq. ft)  
Total balcony area (approx.) : 18.3 sq. m (197 sq. ft)