



## Midhurst Way, E5

£500,000

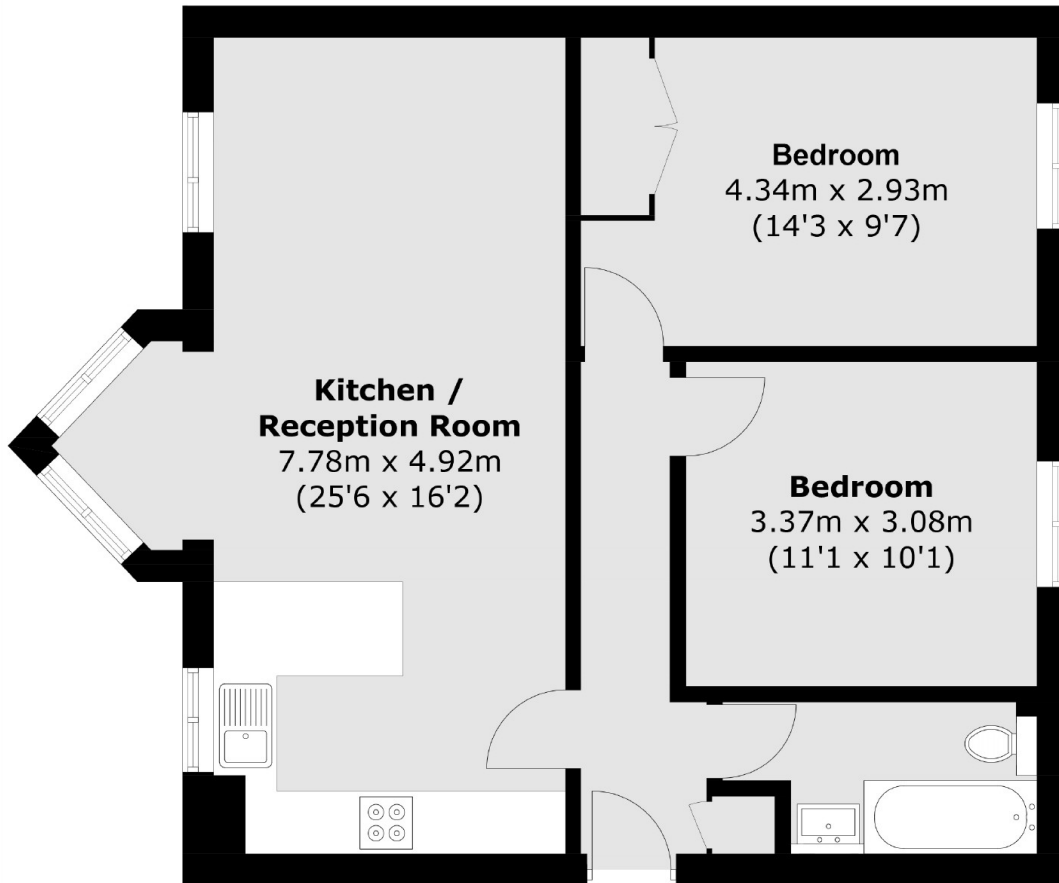
A two double bedroom apartment measuring over 680 sq ft with views over Hackney Downs Park. The property is located on the top floor of a small purpose built block and has been thoughtfully renovated throughout by its current owner. It has a long lease and is being sold chain free.

Midhurst Way is located on Hackney Downs Park. It is under half a mile from Rectory Road and equidistant from Clapton and Hackney Downs & Central Overground Stations. The many shops, cafés and restaurants on Kingsland Road and Mare Street are within walking distance.

### Features

- Two Double Bedrooms
- Recently Renovated
- Open Plan
- Hackney Downs Park
- Top Floor
- Chain Free
- Long Lease

# Midhurst Way, London, E5



Total area (approx.): 63.5 sq. m (683.5 sq. ft)