



Fletching Road, E5

£775,000

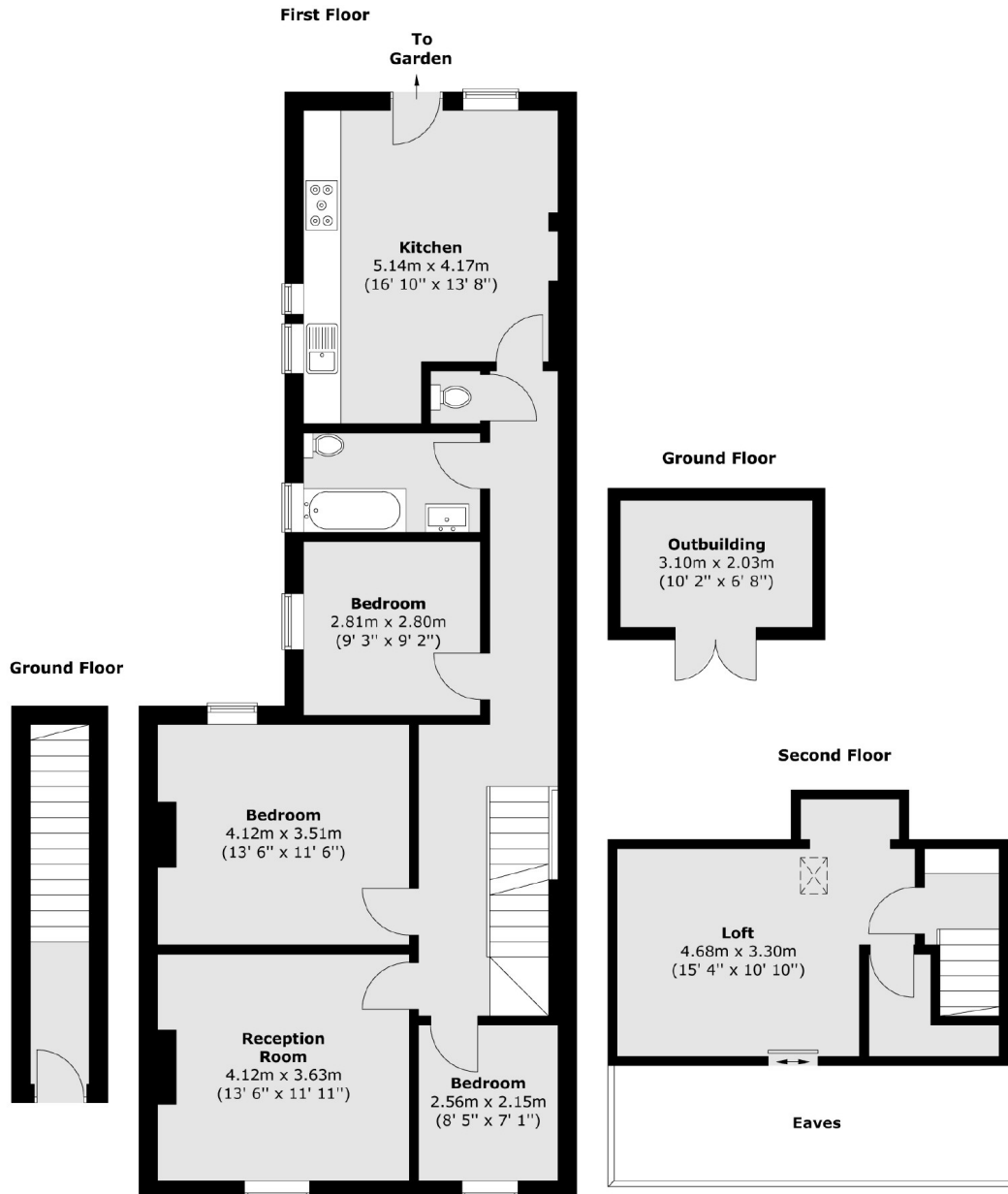
A three bedroom home with a south facing garden located opposite South Millfields Park. The property measures over 1200 sq ft, has an eat-in kitchen, private entrance, garden shed, plenty of storage and views over the park.

This maisonette is ideally located on a no-through road next to Millfields Park and the Hackney Marshes. It is within walking distance to the independent shops, cafes, Sunday Market and restaurants of Chatsworth Road. Clapton and Homerton Overground stations are under one mile away giving you excellent links to the rest of the City.

Features

- Three Bedroom
- Converted Loft Space
- Split Level Maisonette
- Over 1200 sq ft
- Private Garden
- Millfields Park
- Chatsworth Road

Fletching Road, London, E5



Total area (approx.) : 115.7 sq. m (1245 sq. ft)
Total outbuilding area (approx.) : 6.3 sq. m (68 sq. ft)
(Excluding Eaves)