



Watermint Quay, N16

£475,000

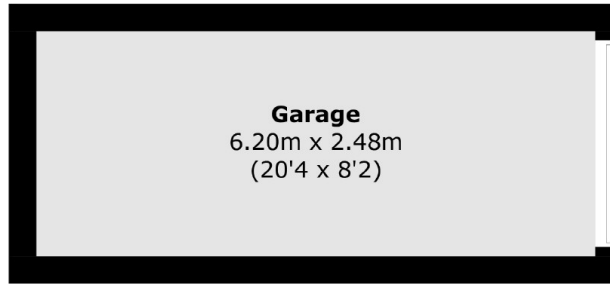
A two bedroom top floor flat with unobstructed views of the River Lea and Walthamstow Wetlands. The property is within a private waterside development designed by Piers Gough and has a separate kitchen, allocated parking space, long lease and a boathouse.

Watermint Quay is situated next to the River Lea, Springfield Park and the Walthamstow Wetlands providing many opportunities for outdoor recreation. The property is located under a mile from Stamford Hill and South Tottenham Overground Stations.

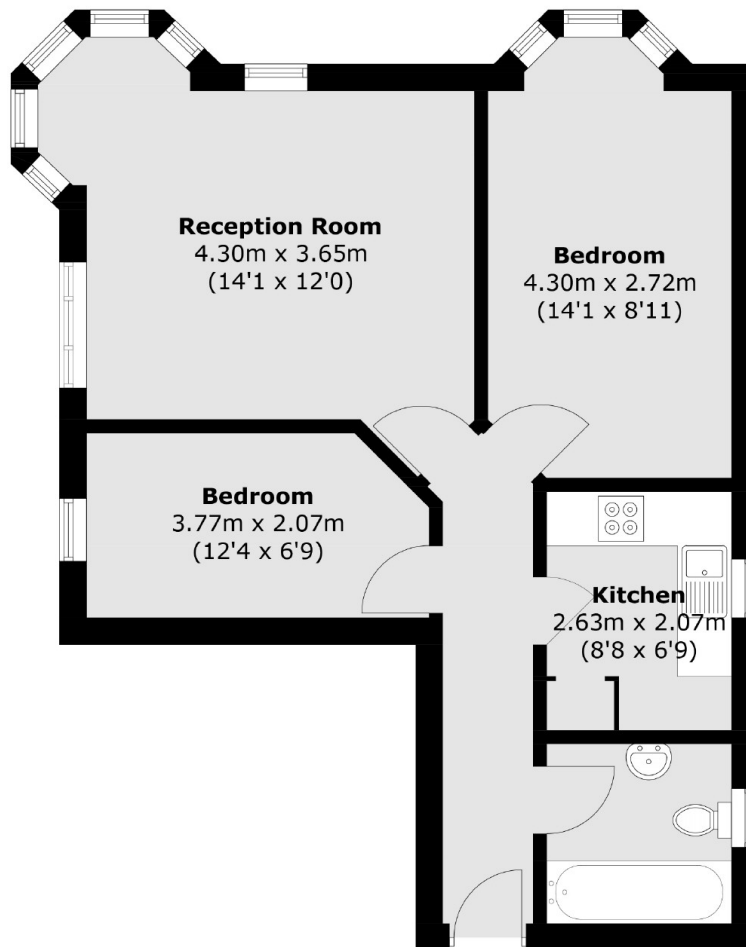
Features

- Two Bedrooms
- Park & River Views
- Allocated Parking Space
- Private Development
- Long Lease
- Boathouse

Watermint Quay, London, N16



(Not Shown In Actual Location / Orientation)



Third Floor

Total area (approx.): 54.9 sq. m (590.9 sq. ft)

Garage (approx.): 15.5 sq. m (166.8 sq. ft)